

Building a highly effective logistics system

To continue to gain market share, HAROPA PORT is expanding its service offering and solutions for transport massification. The following are among the major focuses for the port's efforts:

Published on 13/06/2023 - Updated 20/03/2025

Improving Rouen's maritime access

Launched in 2012, this massive programme to deepen the **navigation channel provides an extra metre** of draught to be able to accommodate the latest generation of bulk carriers. Alongside this, **port infrastructure has been, or is being, adapted** to optimise safety for shipping: quay consolidation, increased mooring depths at berth, creation of a safety command centre at Radicatel, and so on. Cost: **€207m**.

120km
of navigation channel between Honfleur and Rouen
1m
extra draught on both a rising and a falling tide,
7m cu. m.
of dredged material, including 3.5m cu. m. put to good use



©HAROPA PORT / Jean-François Damois

Development of the Radicatel terminal

This site is of strategic importance for economic development across the region as a whole, and the work done here is aimed at adapting the **shipping infrastructure for the gauge of the deepened channel in order to accommodate and develop shortsea traffic.**



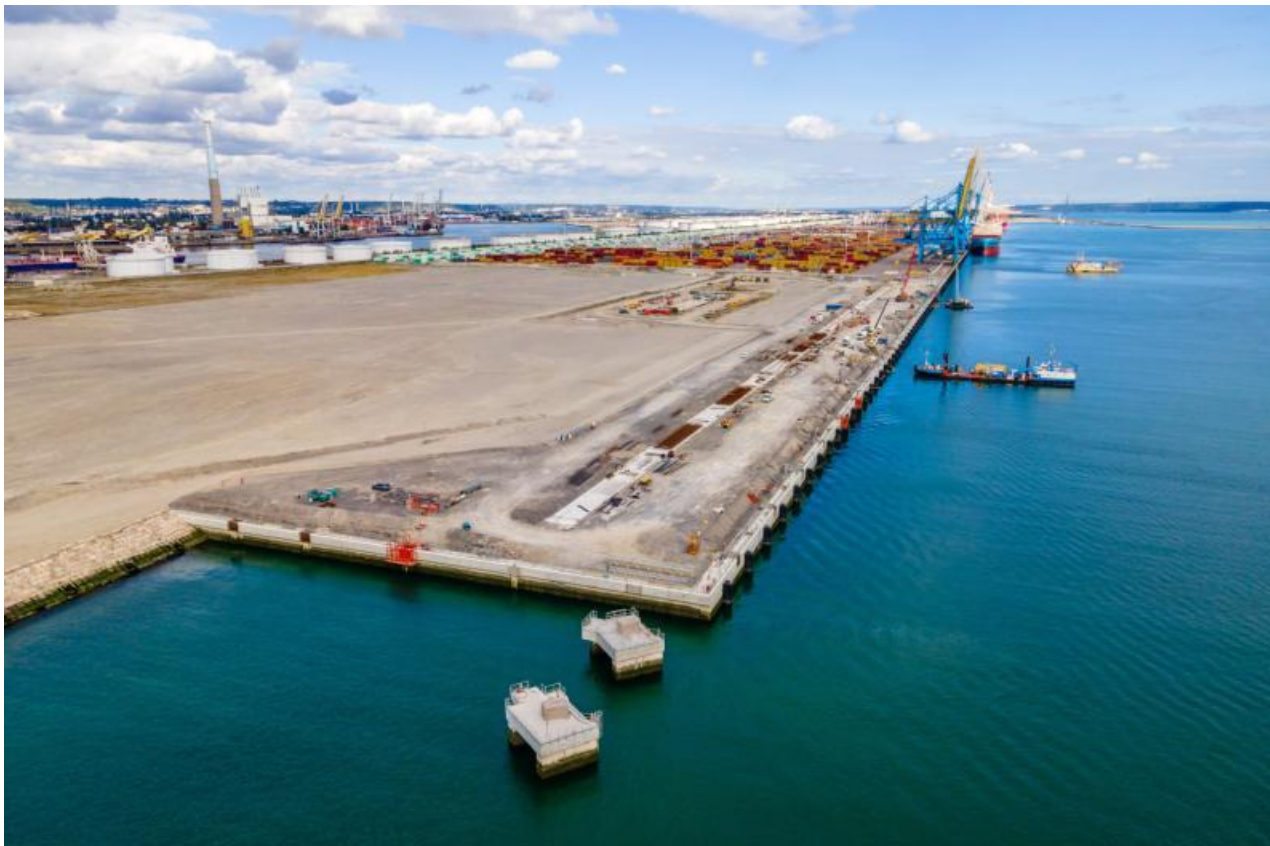
©Haropa port / Nicolas Vallée

220m
of additional dock length
620
of quay in total (after works)

Two new berths at Port 2000

Finalisation of Port 2000 Phase 3 involves creating and granting concession contracts for berths P11 and P12, which will help expand capacity for reception of the vessels operated by the major shipping alliances. This project is unique in France and will provide a new container terminal 4.2km in length at the mouth of the Seine with no tidal constraints and with global connections.

42
hectares and an additional 700m of dock length
700 metres
of additional platform space
2024
for the delivery



©HAROPA PORT / HESLY - SBF

Direct river access to Port 2000

The purpose of this project is to build an access channel known locally as the “cat flap” to give direct access to Port 2000.



©HAROPA PORT / Michel Bizien

URL of the page: <https://www.haropaport.com/en/building-highly-effective-logistics-system>

€197m
for the cost
100 meters
of channel
1 800 meters
of dyke

Expansion of the Limay-Porcheville multimodal platform

Expansion of Limay-Porcheville port will favour the development of new economic activities in the area and promote the expansion of river transport.

An 32ha
extra



©HAROPA PORT / Jean-François Damois



71, quai Colbert, 76600 Le Havre
[+33\(2\) 79 18 05 00](tel:+33279180500)