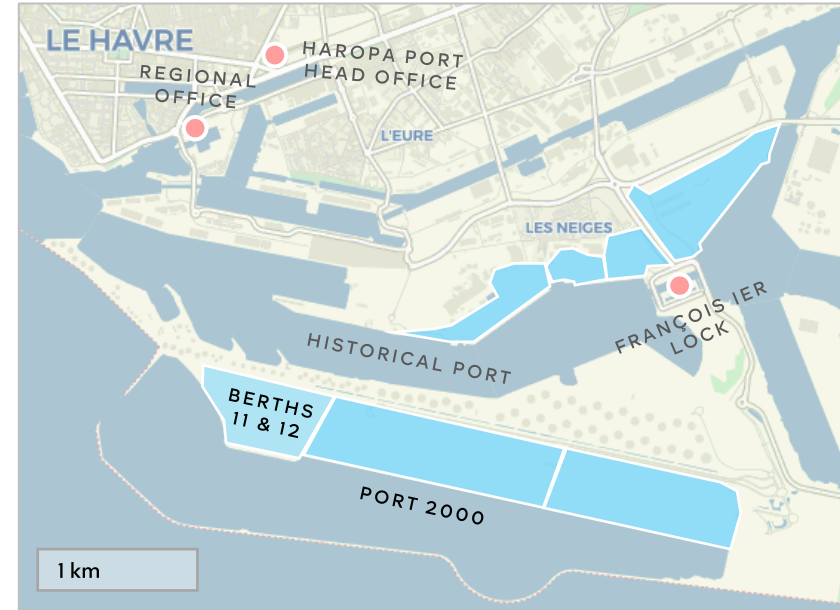


# Berths 11 & 12

<b>Operator</b>	Générale de Manutention Portuaire Winner of the call for tenders
<b>Quay length</b>	700 m; 2 berths
<b>Theoretical draft</b>	17.70 m
<b>Surface area</b>	42 ha
<b>Schedule</b>	<ul style="list-style-type: none"> <li>• Completion: 2026</li> <li>• Commissioning: 2027</li> </ul>



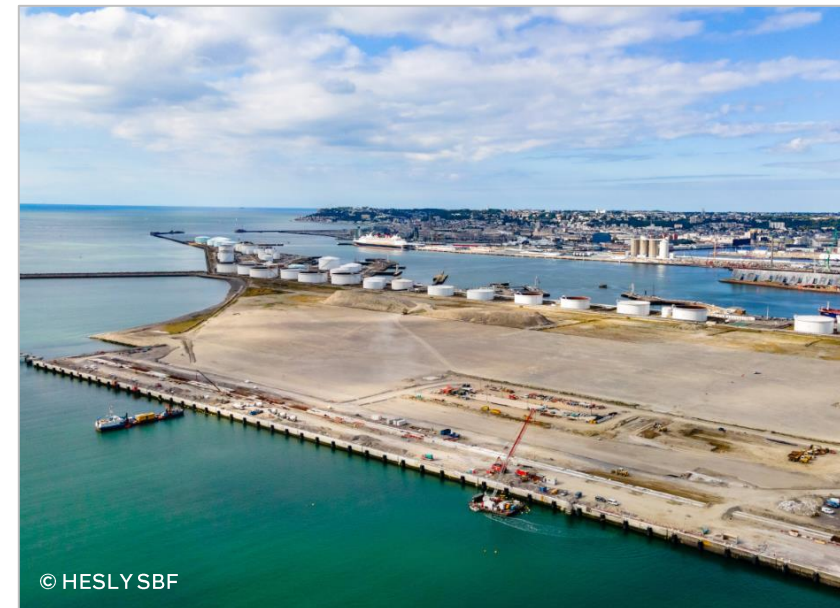
**Annual capacity**  
700,000 TEUs



**Mrs. Nathalie Wagner**  
Sales Manager  
+33 7 62 46 29 79  
[n.wagner@gmportuaire.fr](mailto:n.wagner@gmportuaire.fr)



**GMP head office**  
Avenue du 16<sup>e</sup> Port  
76600 Le Havre  
8.30am-5.30pm



© HESLY SBF