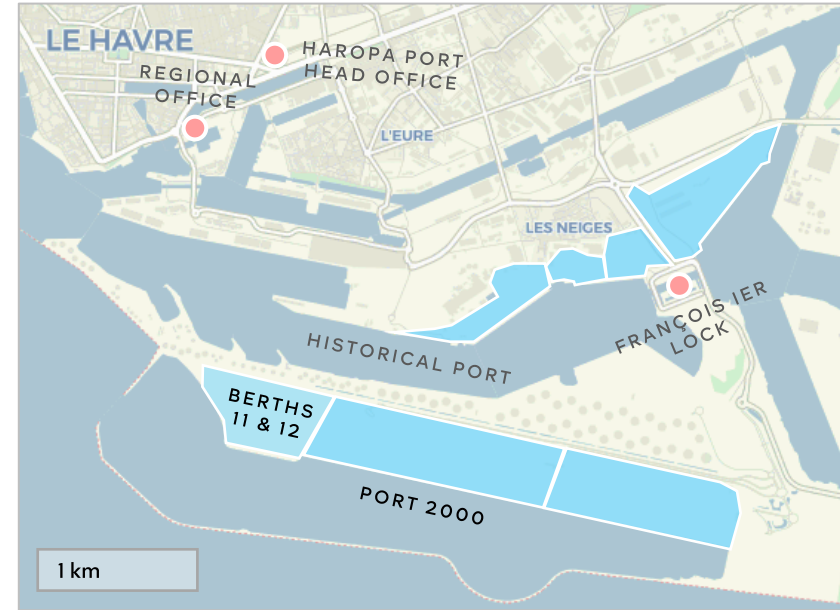


Berths 11 & 12

Operator	Générale de Manutention Portuaire Winner of the call for tenders
Quay length	700 m; 2 berths
Theoretical draft	17.70 m
Surface area	42 ha
Schedule	<ul style="list-style-type: none">• Completion: 2027• Commissioning: 2028



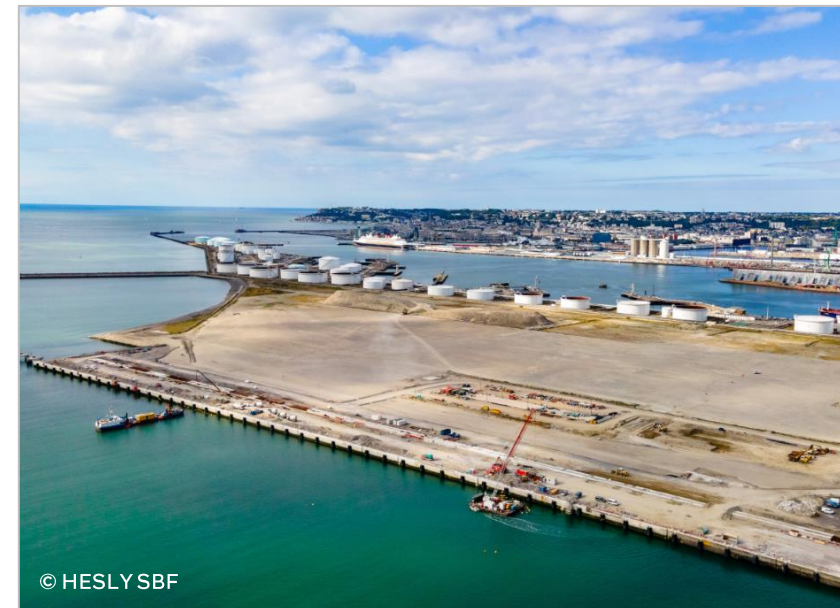
Annual capacity
900,000 TEUs (2028)



Mrs. Nathalie Wagner
Sales Manager
+33 7 62 46 29 79
n.wagner@gmportuaire.fr



GMP head office
Avenue du 16^e Port
76600 Le Havre
8.30am-5.30pm



© HESLY SBF