

Bonneuil-sur-Marne

Shared-use quay	QUP 1	QUP 2	QUP 3
Real estate module	Ref. 5769	Ref. 5740	Ref. 5770
Opening hours	24/7	24/7	24/7
Quay length	87 m	48 m	62 m
Theoretical draft	3.20 m	3.20 m	3.20 m
Quay height	34.6 m	34.65 m	34.76 m
Surface area	2,077 sqm	2,127 sqm	2,184 sqm
Equipment	2 bollards: 10 T	2 bollards: 10 T	2 bollards: 10 T
Access	<ul style="list-style-type: none"> • 8 km south-east of Paris • River: Marne; 2 locks from Paris • Rail: direct connection to the rail terminal • Road: A86, A6, A4 freeways + RN406 (2027) • Special transport: 2TE48, TE120 		
Access control	Key or code given after booking		



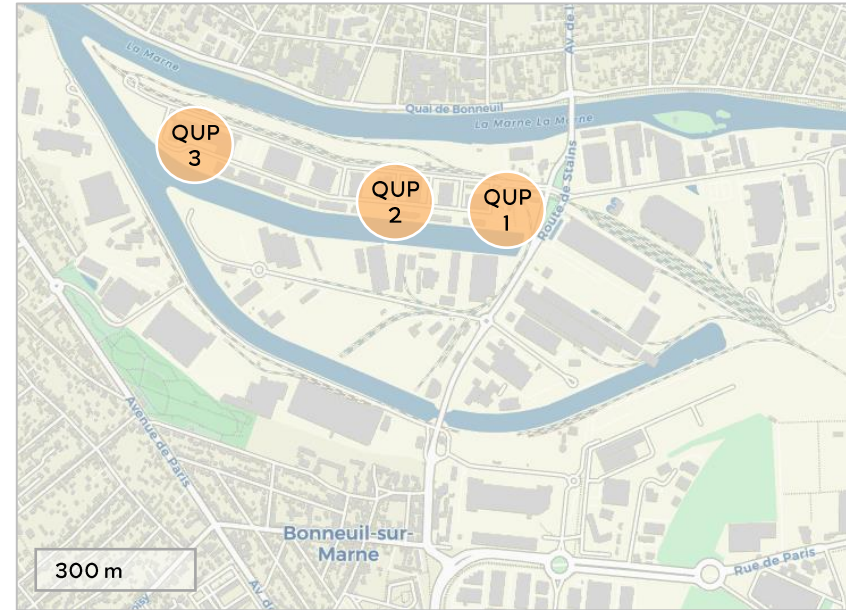
Quay resistance
6 T/sqm



Permissible gauge
●●●● 1,500-3,200 T



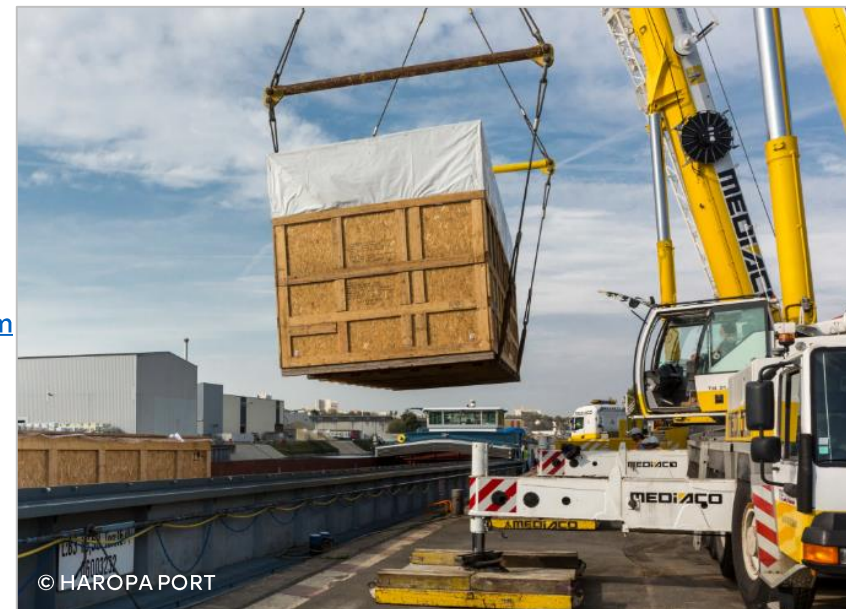
All river activities
Heavy-lift
Excavated material



Agence Seine amont
+33 1 43 39 02 50
accueil-asam@haropaport.com



Port de Bonneuil
Route de la Darse
94380 Bonneuil-sur-Marne



© HAROPA PORT