



Catalogue



**HAROPA
PORT**
Le Havre
Rouen
Paris

River-maritime

Container terminals on the Seine axis

Container terminals on the Seine axis

HAROPA PORT | Le Havre

- Page 4 • Terminal de l'Atlantique
- Page 5 • Terminaux Nord
- Page 6 • Terminal de France
- Page 7 • Terminaux de Normandie
- Page 8 • Berths 11 & 12
- Page 9 • Terminal multimodal

HAROPA PORT | Paris

- Page 14 • Limay-Porcheville
- Page 15 • Gennevilliers
- Page 16 • Paris La Bourdonnais
- Page 17 • Bonneuil-sur-Marne
- Page 18 • Évry-Courcouronnes
- Page 19 • Longueil-Sainte-Marie

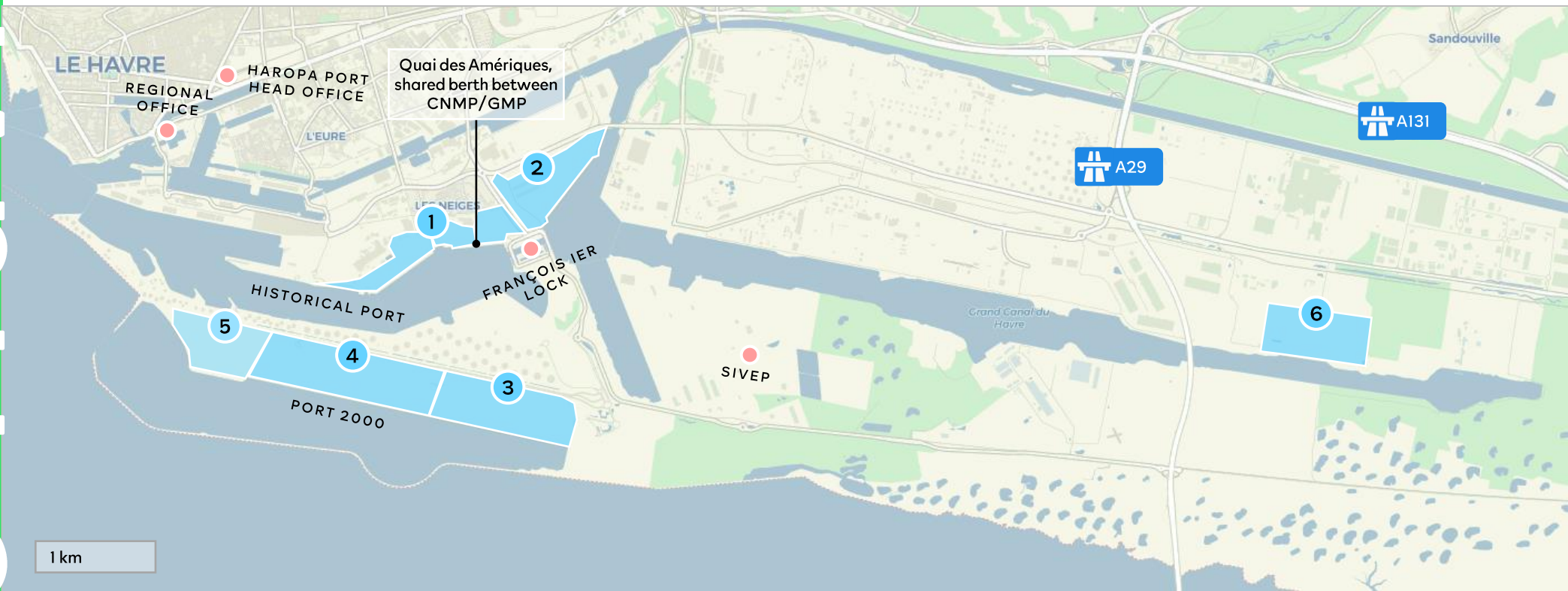
HAROPA PORT | Rouen

- Page 11 • Terminal de Radicâtel
- Page 12 • TCMD



Container

Maritime container terminals port area of Le Havre



- | | | | | | |
|---|-------------------------------------|---|--|---|-----------------------------|
| 1 | Terminal de l'Atlantique
CNMP | 2 | Terminaux Nord
GMP | 3 | Terminal de France
GMP |
| 4 | Terminaux de Normandie
TCF (TiL) | 5 | Berths 11 & 12 under construction
GMP | 6 | Terminal multimodal
LHTE |

Terminal de l'Atlantique

Operator	Compagnie Nouvelle de Manutention Portuaire, share transfer to Seafrigo (2023)	
Quay length	Atlantique: 800 m	Amériques: 500 m
Theoretical draft	Atlantique: 12.50 m	Amériques: 14 m
Lifting height	33-40 m	
Surface area	32 ha	
Equipment	<ul style="list-style-type: none"> • 9 post-panamax gantries incl. 5 on Amériques • 30 straddle carriers • 300 reefer plugs • Storage: 347,000 sqm 	
Services	<ul style="list-style-type: none"> • Container tracking system • Plugging, indexing and continuous inspection of temperature-controlled container • Hazardous goods handling (classes 1 to 9, except subclass 2.3) • Container repair and washing • CCTV terminal • 24/7 security • ISPS compliance 	
Access	<ul style="list-style-type: none"> • Multimodal terminal: 1 round-trip per day • River & maritime: direct access barges • Rail: 3 tracks of 500 m • Road: A29, A131 freeways 	



Annual capacity
600,000 TEUs



Transfer under TSF
For river



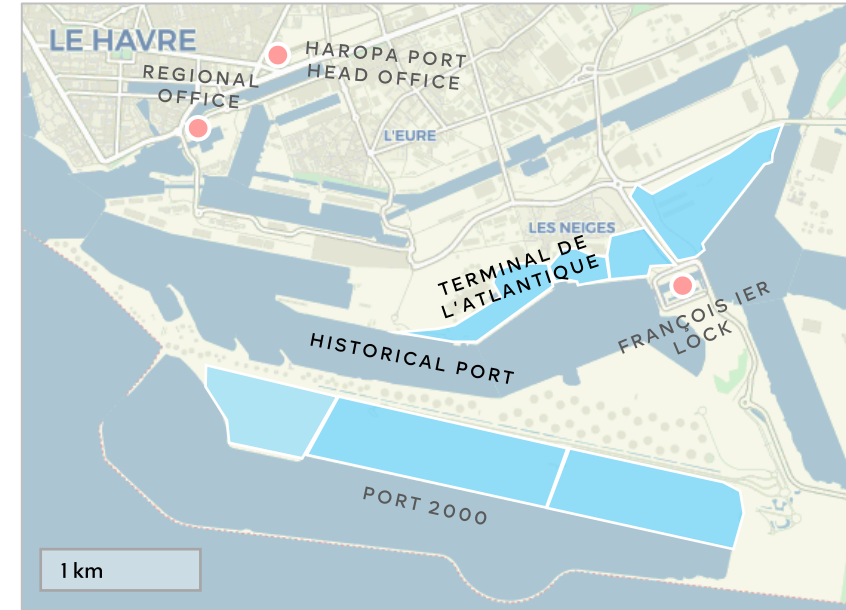
All maritime activities
Container
Heavy-lift
OOG
General cargo



Mr. Fabrice Grandserre
COO
+33 2 35 24 65 13
fabrice.grandserre@cnmp.com



CNMP head office
58 Rue Général Chanzy
76600 Le Havre
8am-6pm



© HAROPA PORT

Terminaux Nord

Operator	Générale de Manutention Portuaire	
Quay length	Europe: 1,161 m	Amériques: 500 m
Theoretical draft	Europe: 15 m	Amériques: 14 m
Lifting height	33-40 m	
Surface area	70 ha	
Equipment	<ul style="list-style-type: none"> • 5 post-panamax gantries on Amériques • 1 Liebherr mobile crane: 100 T • 1 barge crane • 20 straddle carriers • 352 reefer plugs • Indoor storage: 23,000 sqm • Vehicle fleet: 50,000 sqm 	
Services	<ul style="list-style-type: none"> • Direct docking & barge operations • VGM weighing certification • On-site customs area • 24/7 security • ISPS compliance • AEO status • ISO standards: 9001, 14001, 28000, 45001 • OCR system 	
Access	<ul style="list-style-type: none"> • River & maritime: direct access barges • Rail • Road: A29, A131 freeways 	



Annual capacity
750,000 TEUs



Transfer under TSF
For river



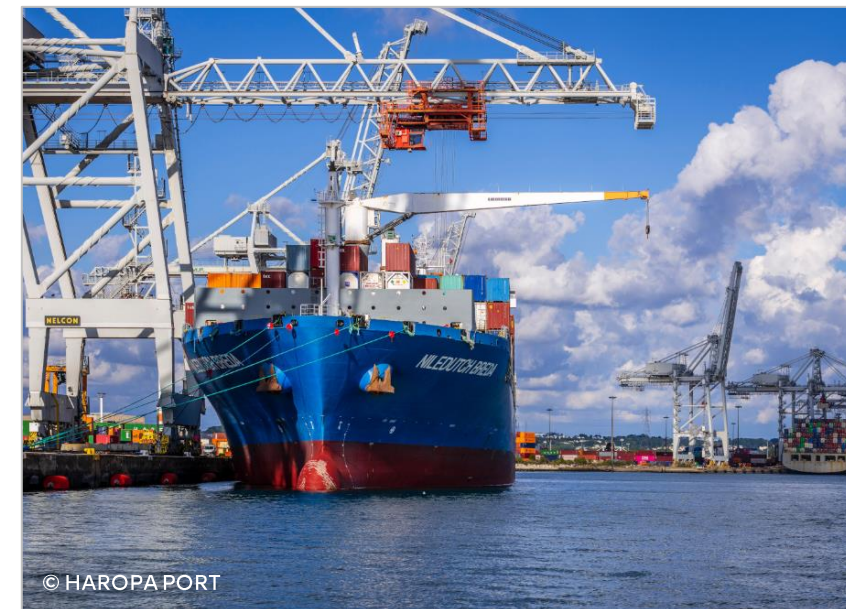
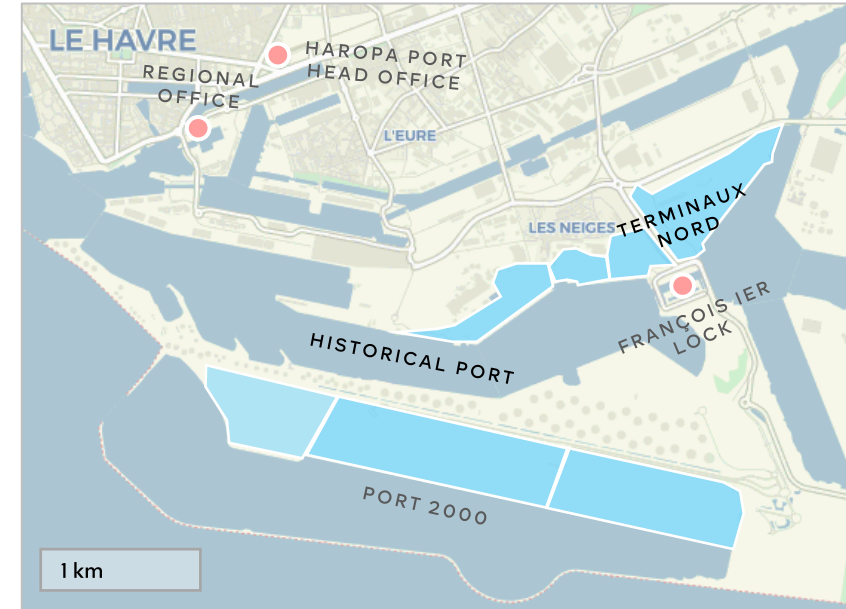
All maritime activities
Container
Heavy-lift
Con-Ro
Ro-Ro
General cargo
Project cargo



Mrs. Nathalie Wagner
Sales Manager
+337 62 46 29 79
n.wagner@gmportuaire.fr



GMP head office
Avenue du 16^e Port
76600 Le Havre
8.30am-5.30pm



© HAROPA PORT

Terminal de France

Operator	Générale de Manutention Portuaire
Quay length	1,400 m including 200 m for barge; 4 berths
Theoretical draft	15.50 m
Lifting height	40 m
Surface area	88,7 ha
Equipment	<ul style="list-style-type: none"> • 14 super post-panamax gantries • 3 rail gantries • 70 straddle carriers • 1,057 reefer plugs • Fleet storage: 30,000 TEUs
Services	<ul style="list-style-type: none"> • VGM weighing certification • On-site customs area • 24/7 security • ISPS compliance • AEO status • ISO standards: 9001, 14001, 28000, 45001 • OCR system
Access	<ul style="list-style-type: none"> • Multimodal terminal: 3 round-trips per day • River & maritime: direct access barges • Rail station: 6 tracks of 800 m • Road: A29, A131 freeways



Annual capacity
1.5 M TEUs



Transfer under TSF
For river and rail



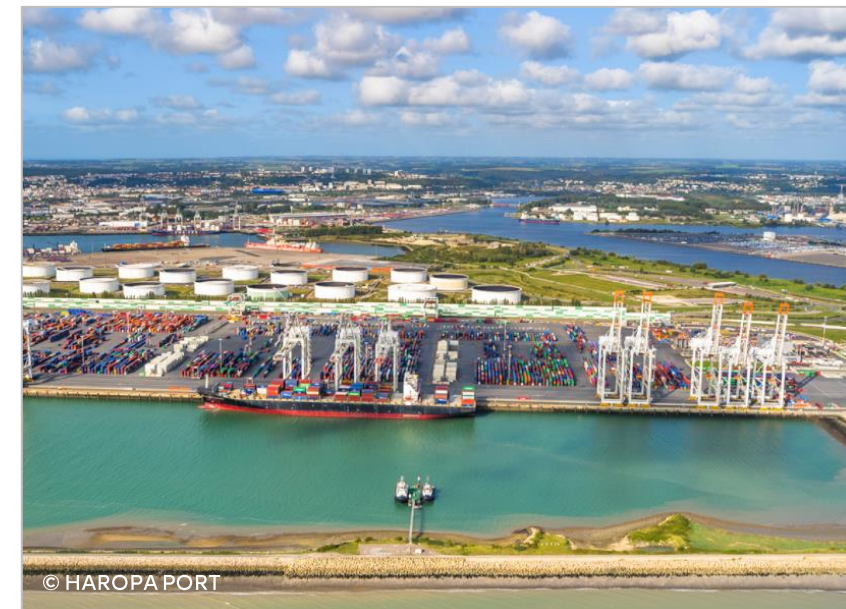
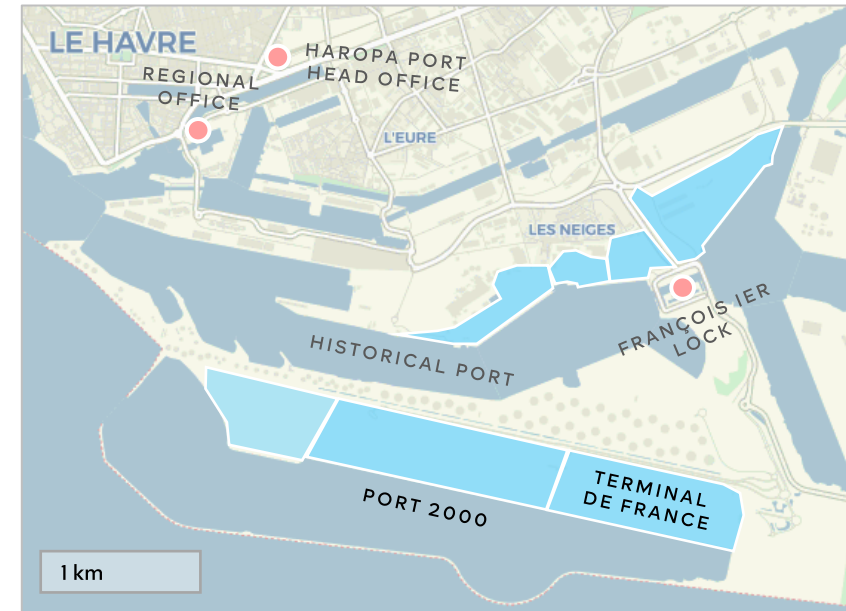
All maritime activities
Container
Heavy-lift
OOG



Mrs. Nathalie Wagner
Sales Manager
+33 7 62 46 29 79
n.wagner@gmportuaire.fr



GMP head office
Avenue du 16^e Port
76600 Le Havre
8.30am-5.30pm



© HAROPA PORT

Terminaux de Normandie

Operator	Terminaux à Conteneurs de France (TiL)
Quay length	2,100 m; 6 berths
Theoretical draft	16 m
Lifting height	40-42,50 m
Surface area	107 ha
Equipment	<ul style="list-style-type: none"> • 9 super post-panamax gantries • 2 over-panamax gantries • 68 straddle carriers • 1,090 reefer plugs
Services	<ul style="list-style-type: none"> • On-site washing area • On-site customs area • CCTV terminal • 24/7 security • ISPS compliance • AEO status • OCR system
Access	<ul style="list-style-type: none"> • Multimodal terminal: 2 round-trips per day • River & maritime: direct access barges • Rail: 6 tracks (3: 830 m; 3: 500 m) • Road: A29, A131 freeways



Annual capacity
1.8 MTEUs



Transfer under TSF
For river



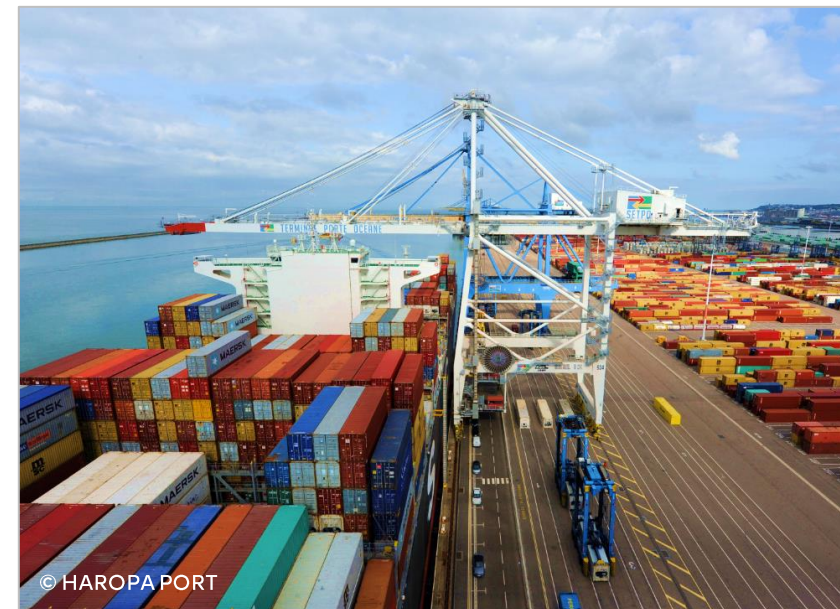
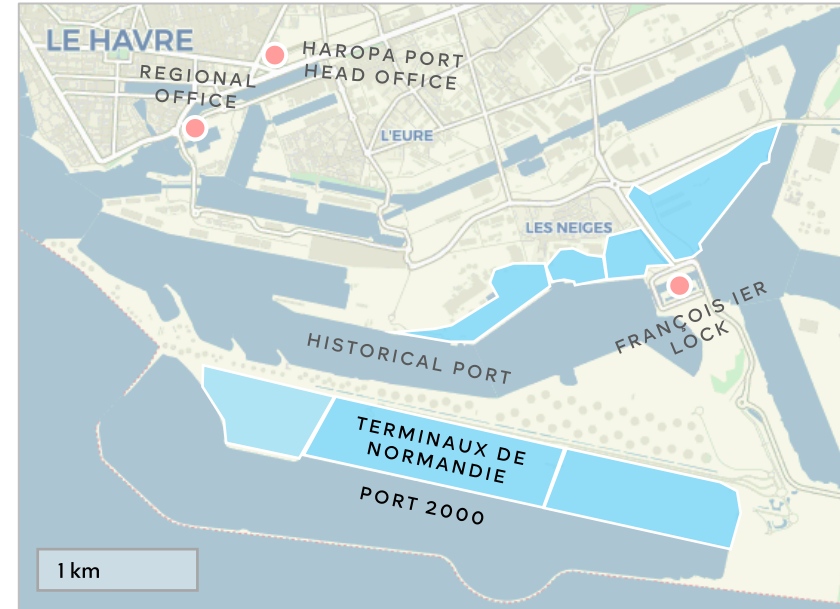
All maritime activities
Container
Heavy-lift



Mr. Frank Narbonne
Executive Vice President
+33 2 35 13 79 04
+33 6 75 65 27 75
fnarbonne@tnint.com



TiL head office
32 Rue de Colmar
76600 Le Havre



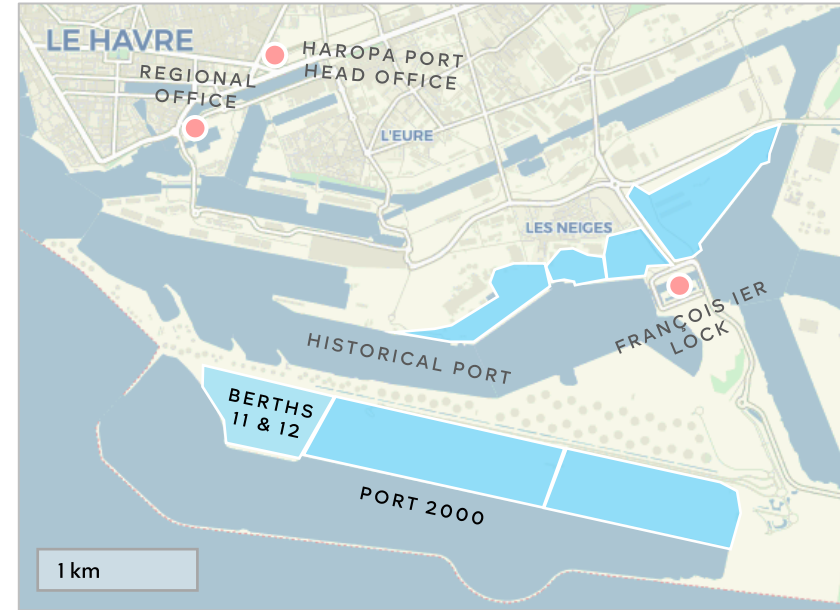
© HAROPA PORT

Berths 11 & 12

Operator	Générale de Manutention Portuaire Winner of the call for tenders
Quay length	700 m; 2 berths
Theoretical draft	17.70 m
Surface area	42 ha
Schedule	<ul style="list-style-type: none"> • Completion: 2026 • Commissioning: 2027



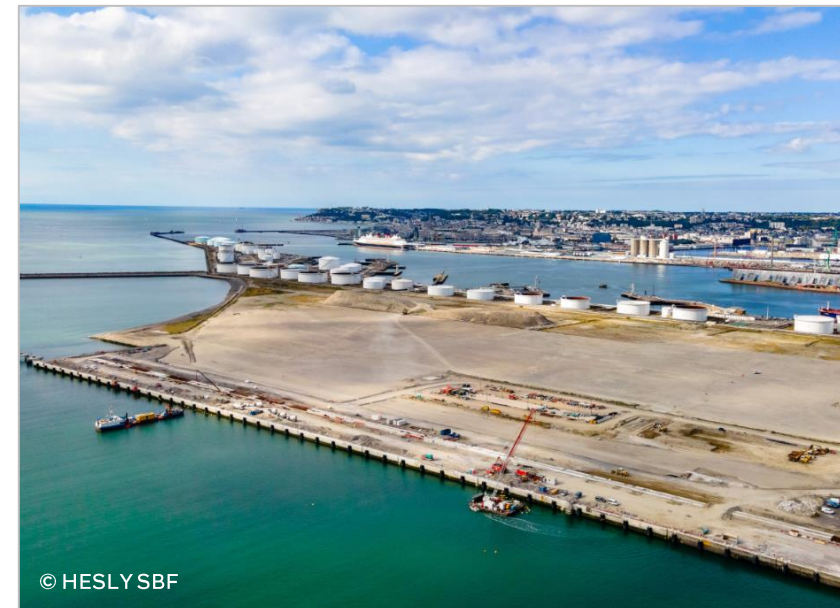
Annual capacity
700,000 TEUs



Mrs. Nathalie Wagner
Sales Manager
+33 7 62 46 29 79
n.wagner@gmportuaire.fr



GMP head office
Avenue du 16^e Port
76600 Le Havre
8.30am-5.30pm



© HESLY SBF

Terminal multimodal

Operator	Le Havre Terminal Exploitation	
Quay length	River terminal: 400 m; 2 berths	Rail terminal: 860 m
Surface area	48 ha	
Equipment	<ul style="list-style-type: none"> • 2 river gantries: 65 T • 2 rail gantries: 50 T • 3 reach stackers: 45 T • 1 shunting locomotive: 1,272 T • 30 reefer plugs • Container storage: 3,500 TEUs 	
Services	<ul style="list-style-type: none"> • Reefer and hazardous goods dedicated areas • Free storage: 6 days and 10 for hazardous goods • Container handling • 6 truck parking areas for loading/unloading • On-site washing area • Enhanced security control area 	
Access	<ul style="list-style-type: none"> • Maritime terminals: Terminal de l'Atlantique, Terminal de France, Terminaux de Normandie • Shuttle frequency: 6 round-trips per day • Rail: 10 tracks • Road: A29, A131 freeways 	



Annual capacity
200,000 TEUs



Transfer under TSF
For river



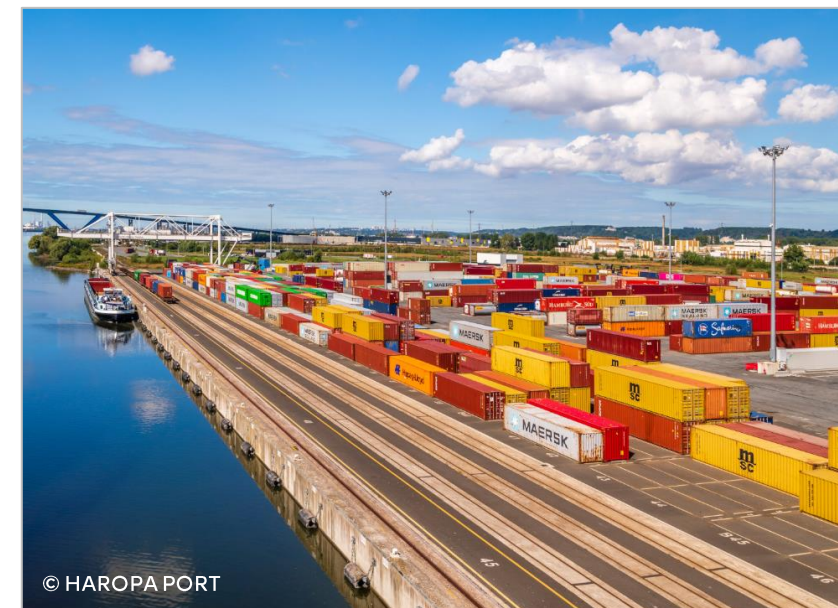
All maritime activities
Container



Mr. Christophe Régnier
CEO
+33 2 78 34 02 11
cregnier@lhte.fr

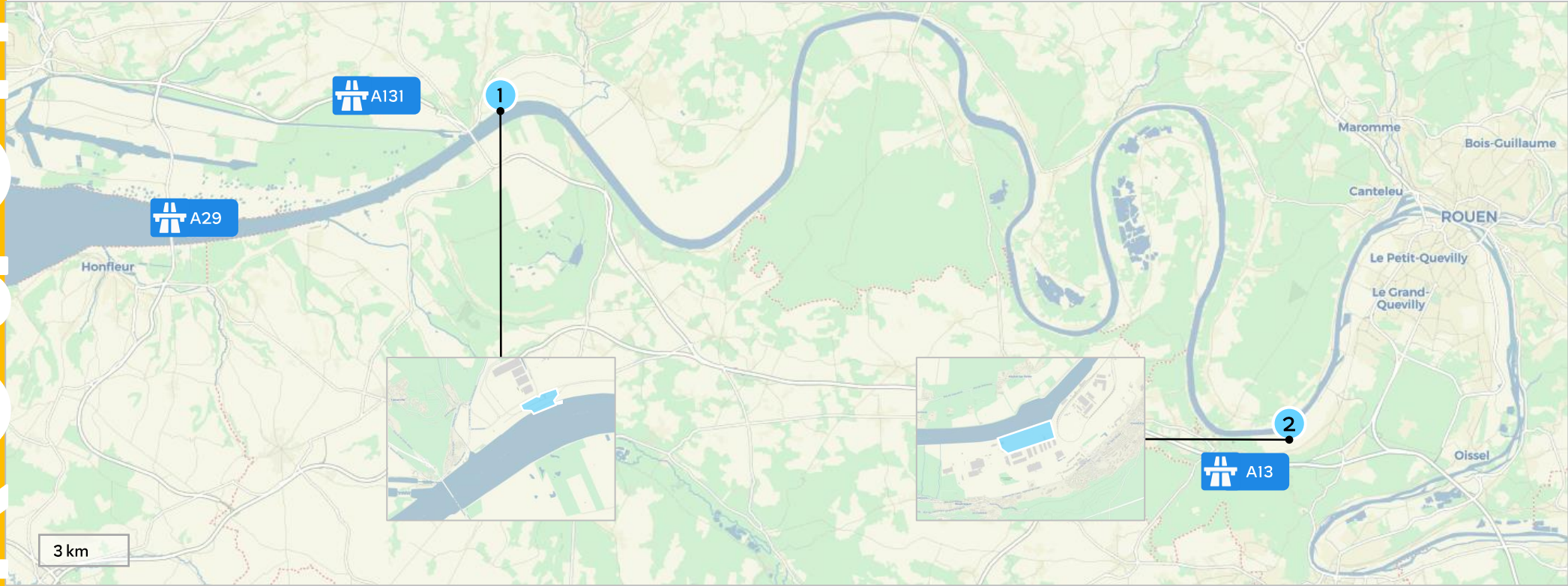


LHTE head office
5058 Voie des Tadornes
76430 Sandouville
7.15am-8pm



© HAROPA PORT

Maritime container terminals port area of Rouen



- 1 Terminal de Radicâtel
Katoen Natie
- 2 TCMD
Somap (Marfret) & AMS (Maritime Kuhn)

Terminal de Radicâtel

Operator	Katoen Natie
Quay length	420 m
Theoretical draft	10.70 m
Surface area	17 ha
Equipment	<ul style="list-style-type: none"> • 2 mobile cranes: 64 T; 124 T • 60 reefer plugs • Private warehouses: 84,000 sqm • Vehicle fleet: 10,000 sqm
Services	<ul style="list-style-type: none"> • Stuffing/unstuffing • Crane supply on request • Tax-free storage under special customs regulations • VGM weighing certification • Container repair and washing • Pre-departure inspection on site • 24/7 security • ISPS compliance
Access	<ul style="list-style-type: none"> • Multimodal one-stop shop • Ro-Ro: all types of vehicles with access via a ramp and extended by a private mobile pontoon • River • Rail: 4 tracks of 400 m • Road: A131 freeway



Annual capacity
30,000 TEUs & 500,000 T



Transfer under TSF
For river



All maritime activities
Container
Heavy-lift
Wind turbines
Project cargo
Dry bulk
General cargo
Ro-Ro



Mr. Arnaud Aubry
Terminal Manager
+33 2 32 84 15 98
arnaud.aubry@katoennatie.com



Katoen Natie head office
Route de la Plaine
76700 Gonfreville-l'Orcher
8am-6pm



© HAROPA PORT

TCMD

Operators	Somap (Marfret) & AMS (Maritime Kuhn)
Quay length	1,150 m; 6 berths
Theoretical draft	10.50-11.30 m
Surface area	41 ha
Equipment	<ul style="list-style-type: none"> • 2 gantries (1 Somap & 1 AMS) • 5 reach stackers • 8 trailers • 1 mobile crane: 100 T • 60 reefer plugs • 3 indoor warehouses: 4,000 sqm • 12 private warehouses: 200,000 sqm • Container storage: 180,000 sqm
Services	<ul style="list-style-type: none"> • VGM weighing certification • Value-added services: customs, ventilation, gas measurement • CCTV terminal • 24/7 security • ISPS compliance • AEO status • ISO standard: 9001
Access	<ul style="list-style-type: none"> • River • Rail • Road: A13 freeway



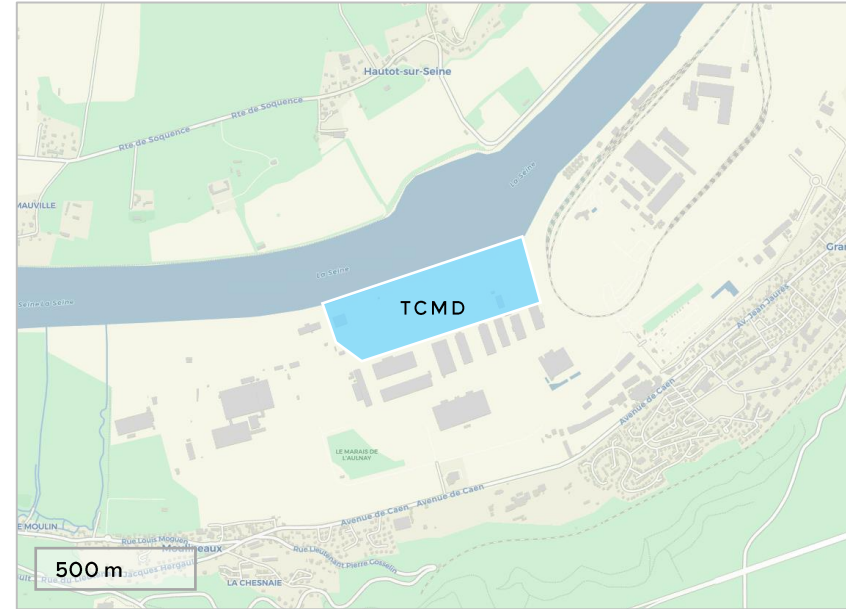
Annual capacity
65,000 TEUs & 800,000 T



Transfer under TSF
For river



All maritime activities
Container
Heavy-lift
Con-Ro
Ro-Ro
General cargo



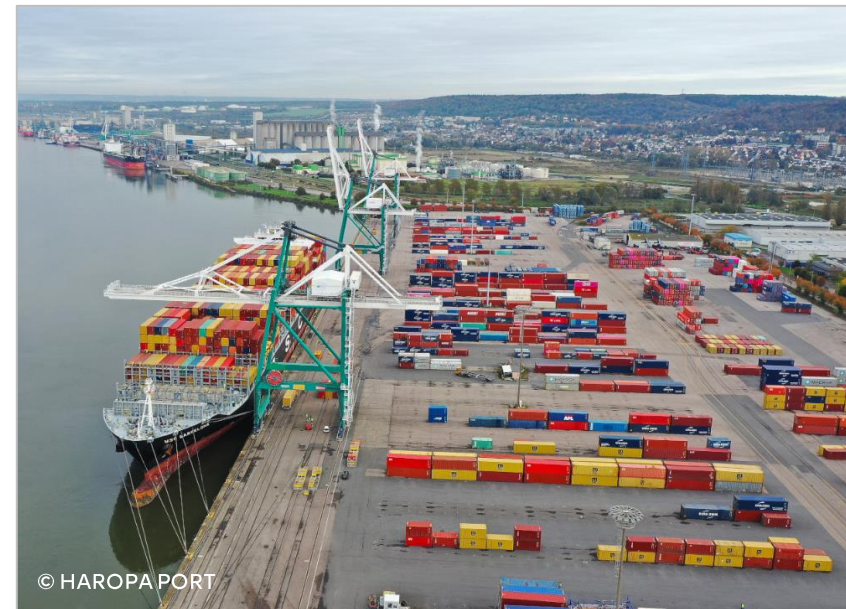
Mr. Vincent Saurel
Manager
+33 2 32 81 83 50
vs aurel@marfret.fr



Mr. Bruno Martin
Manager
+33 2 32 11 46 83
b.martin@ams-mk.com



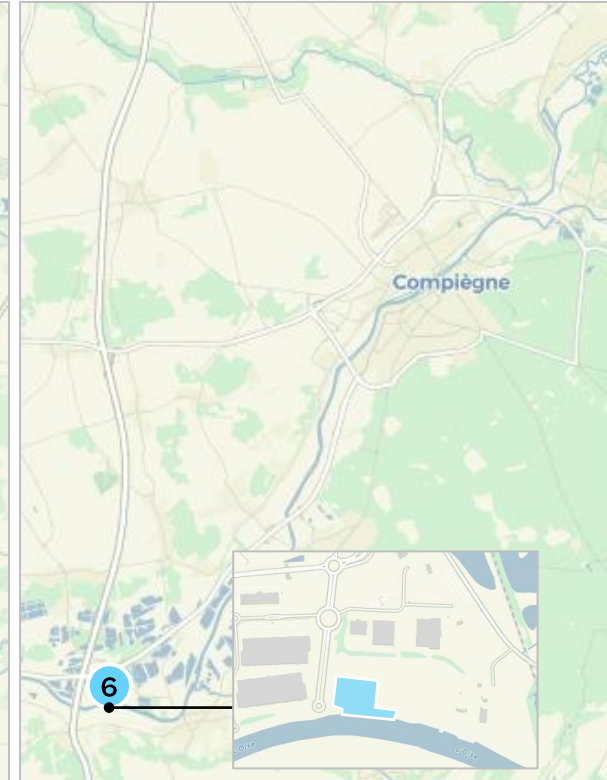
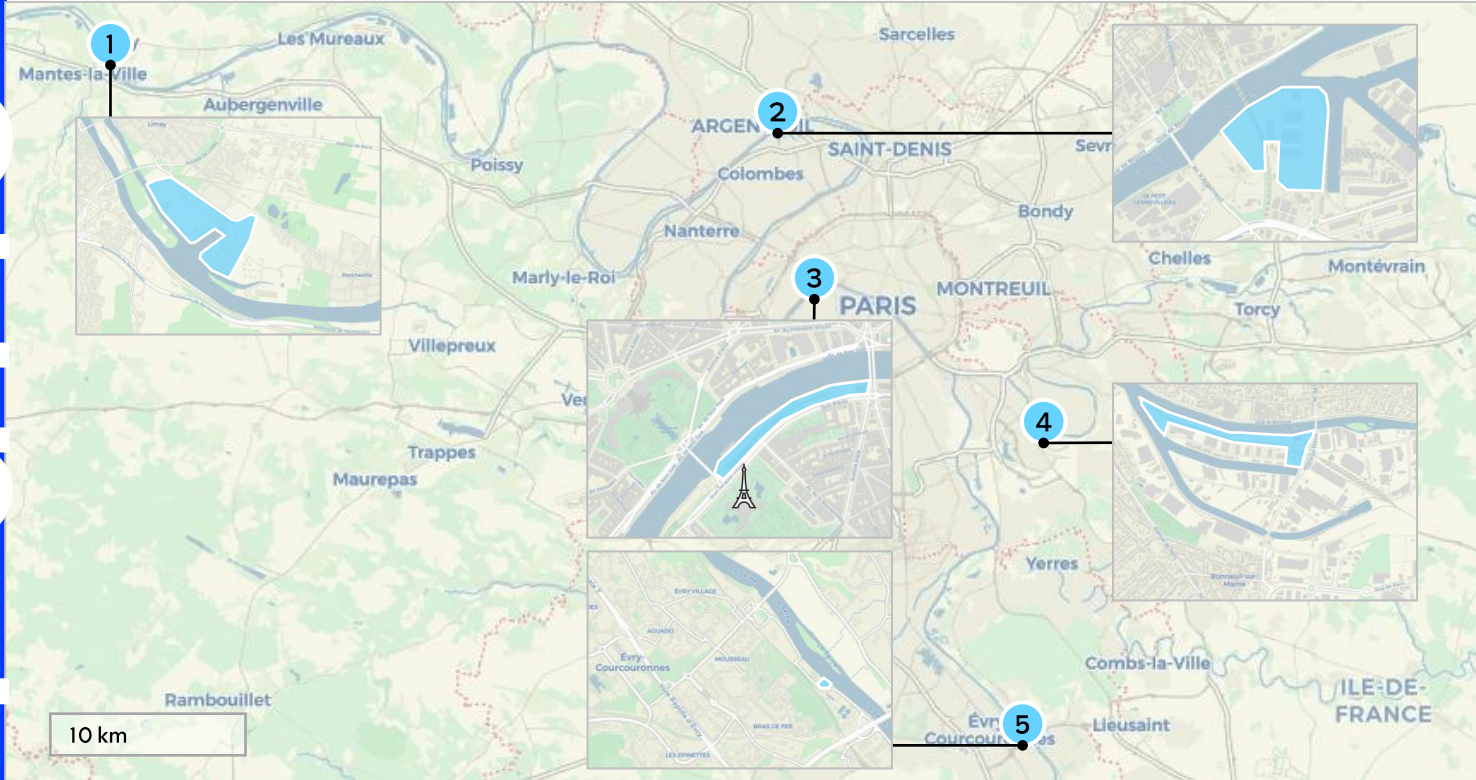
Somap & AMS head office
Boulevard de l'Île aux Oiseaux
76530 Grand-Couronne
7.30-11.15am / 1.30-5.15pm



© HAROPA PORT

River container terminals

port area of Paris



- | | | |
|---|---|--|
| 1 Limay-Porcheville (78)
TDS | 2 Gennevilliers (92)
PTSA | 3 Paris La Bourdonnais (75)
TDS |
| 4 Bonneuil-sur-Marne (94)
TDS | 5 Évry-Courcouronnes (91)
TDS | 6 Longueil-Sainte-Marie (60)
TDS |

Limay-Porcheville

Operator	Terminaux de Seine
Quay length	100 m; 3 berths
Theoretical draft	3.50 m
Quay height	8.60 m
Surface area	0.6 ha
Equipment	<ul style="list-style-type: none"> • 1 negative reach stacker: 45 T • 1 positive reach stacker: 42 T • 1 loader • 2 forklifts
Services	<ul style="list-style-type: none"> • Bonded storage • River and road handling • Container-specific: preparation, fumigation, insulated bag installation, etc. • ISPS compliance • AEO status in progress
Access	<ul style="list-style-type: none"> • #1 port at the Paris region entrance network • River: Seine • Rail • Road: A13 freeway



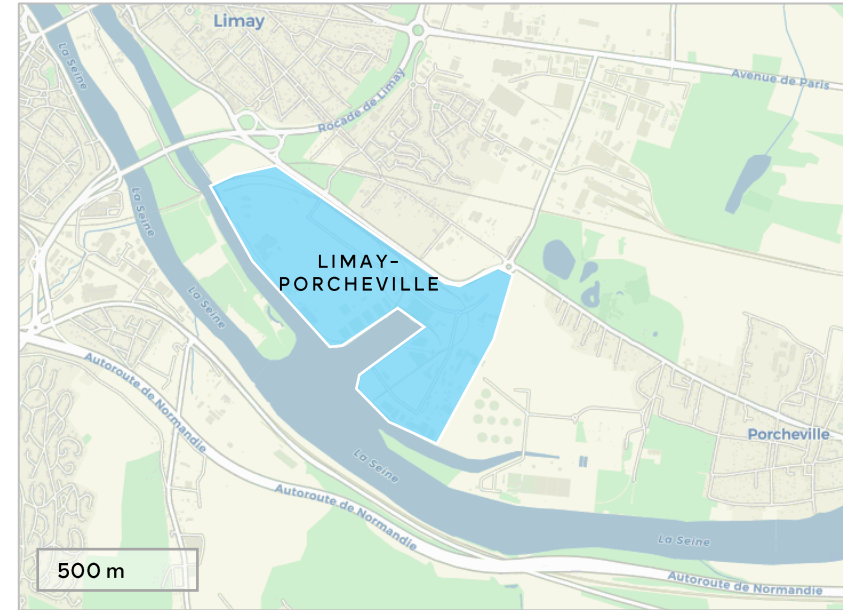
Annual capacity
30,000 TEUs



Transfer under TSF
For river



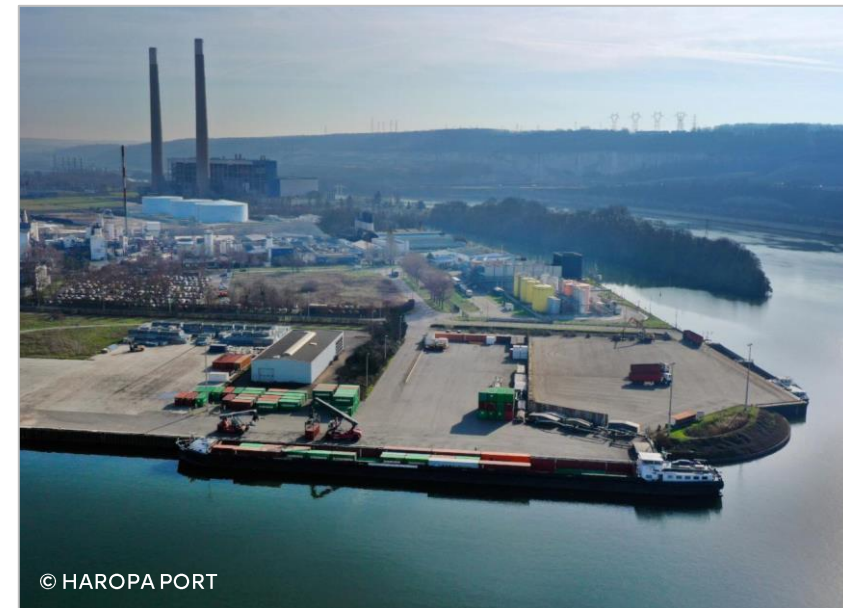
All river activities
Container



Mr. Juan-Manuel Suárez
General Manager
+331 47 94 33 48
juanmanuel.suarez@paris-terminal.com



Port de Limay
Route des Grands Vals
78520 Limay
8am-5.30pm



© HAROPA PORT

Gennevilliers

Operator	Paris Terminal SA
Quay length	750 m
Theoretical draft	3.50 m
Quay height	8.60 m
Surface area	25 ha
Equipment	<ul style="list-style-type: none"> • 3 multimodal gantries: river, rail and road including 1 gantry crane for transshipment between two boats • 3 intermodal reach stackers: 45 T • 3 positive reach stackers: 42 and 45 T • 8 forklifts • 3 harbor tractors • 1 weighbridge • 12 reefer plugs
Services	<ul style="list-style-type: none"> • Bonded storage • Deposits possibility • River, rail and road handling • Container-specific: preparation, fumigation, insulated bag installation, etc. • CCTV terminal • ISPS compliance • AEO status
Access	<ul style="list-style-type: none"> • At the heart of the economic activity between La Défense and the Paris-Charles de Gaulle Airport • #1 river container port in France • River: Seine • Rail: 3 tracks of 350 m on Darse 1 • Road: A86, A14, A15, A1 freeways



Annual capacity
370,000 TEUs



Transfer under TSF
For river



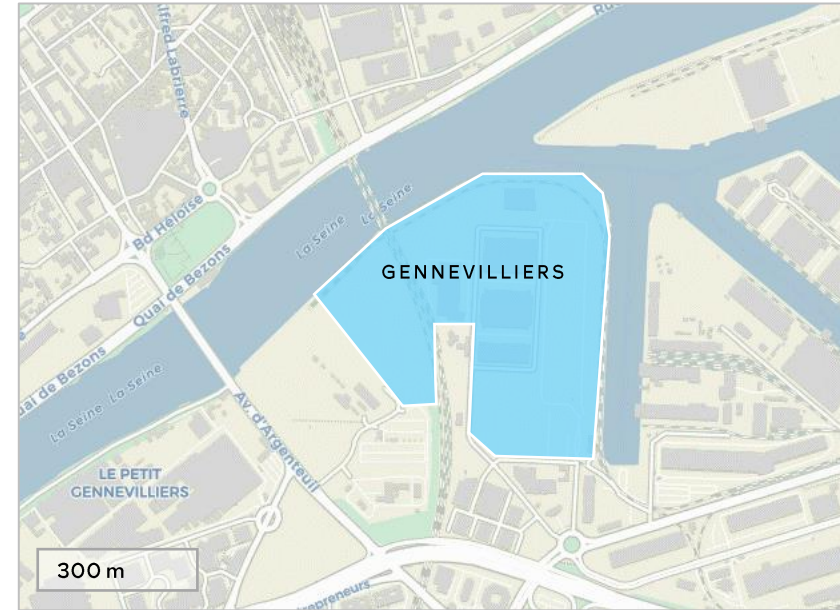
All river activities
Container



Mr. Juan-Manuel Suárez
General Manager
+331 47 94 33 48
juanmanuel.suarez@paris-terminal.com



Port de Gennevilliers
Route Principale du Port
92230 Gennevilliers
5.30am-6.30pm



© HAROPA PORT

Paris La Bourdonnais

Operator	Terminaux de Seine
Quay length	60 m
Theoretical draft	2.50 m
Quay height	5.70 m
Surface area	0.28 ha
Equipment	1 negative reach stacker: 45 T
Access	<ul style="list-style-type: none">• At the very heart of Paris• Dedicated to urban logistics• River: Seine• Road: ring road



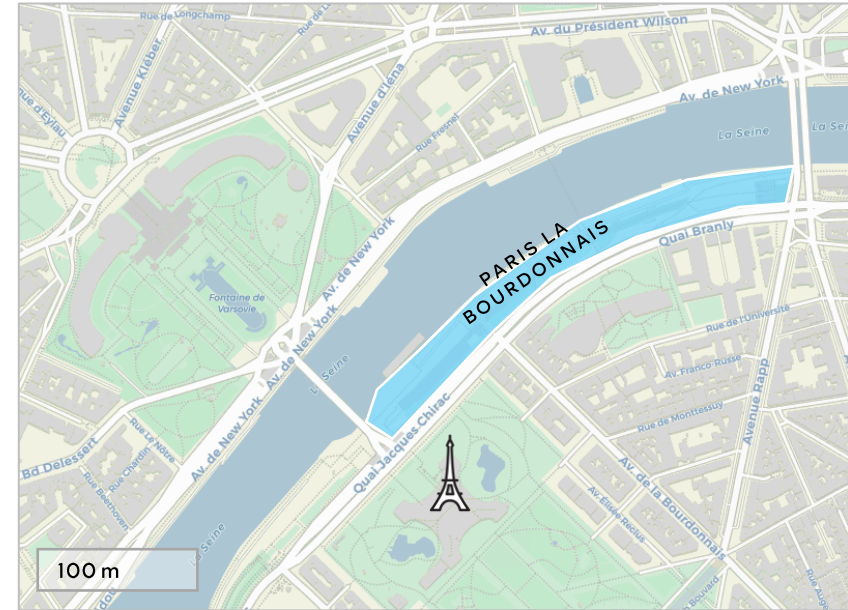
Annual capacity
30,000 TEUs



Transfer under TSF
For river



All river activities
Container



Mr. Juan-Manuel Suárez
General Manager
+331 47 94 33 48
juanmanuel.suarez@paris-terminal.com



Port de La Bourdonnais
Port de La Bourdonnais
75007 Paris
5am-1pm



© HAROPA PORT

Bonneuil-sur-Marne

Operator	Terminaux de Seine
Quay length	80 m; 4 berths
Theoretical draft	2.50 m
Quay height	5.70 m
Surface area	1.2 ha
Equipment	<ul style="list-style-type: none"> • 2 negative reach stackers: 45 T • 9 reefer plugs
Services	<ul style="list-style-type: none"> • Bonded storage • River and road handling • Container-specific: preparation, fumigation, degassing, heat treatment, insulated bag installation, etc. • AEO status
Access	<ul style="list-style-type: none"> • 8 km south-east of Paris • #2 multimodal platform in the Paris region with quadrimodal service including air transport • River: Marne • Rail: direct connection to the rail terminal • Road: A86, A6, A4 freeways + RN406 (2027)



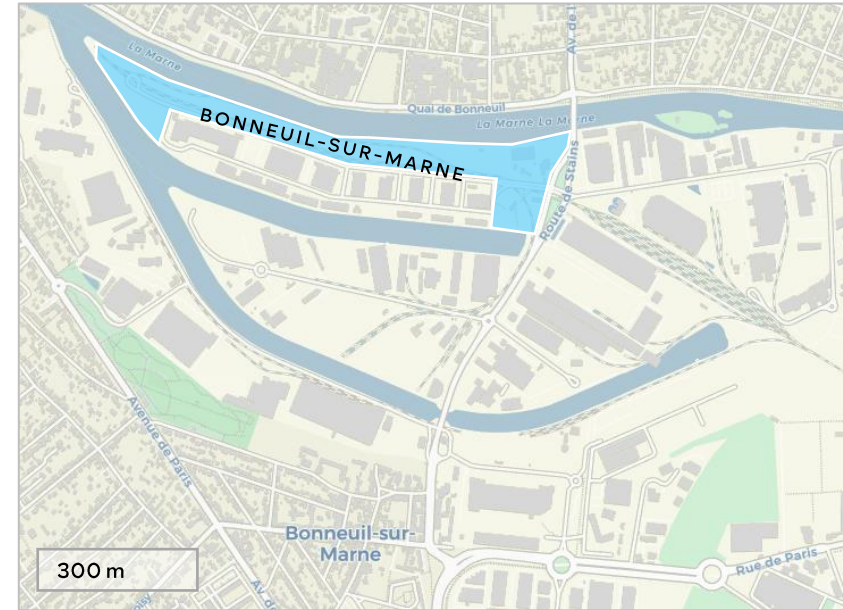
Annual capacity
25,000 TEUs



Transfer under TSF
For river



All river activities
Container



Mr. Juan-Manuel Suárez
General Manager
+331 47 94 33 48
juanmanuel.suarez@paris-terminal.com



Port de Bonneuil
Route de Stains
94380 Bonneuil-sur-Marne
7am-5.30pm



© Ville de Bonneuil-sur-Marne

Évry-Courcouronnes

Operator	Terminaux de Seine
Quay length	80 m; 2 berths
Theoretical draft	2.50 m
Quay height	5.90 m
Surface area	0.5 ha
Equipment	<ul style="list-style-type: none"> • 1 negative reach stacker: 45 T • 1 Ro-Ro ramp
Services	<ul style="list-style-type: none"> • Bonded storage • AEO status in progress
Access	<ul style="list-style-type: none"> • 25 km south of Paris • River: Seine • Road: A6, A118 freeways



Annual capacity
10,000 TEUs



Transfer under TSF
For river



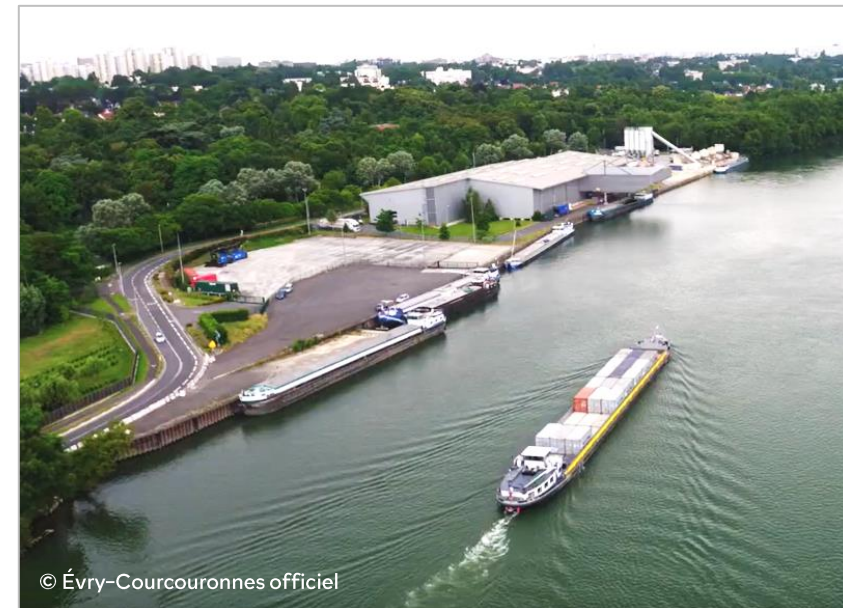
All river activities
Container
Ro-Ro



Mr. Juan-Manuel Suárez
General Manager
+33 1 47 94 33 48
juanmanuel.suarez@paris-terminal.com



Port d'Évry
Rue des Pavéurs
91000 Évry-Courcouronnes
8am-5.30pm



© Évry-Courcouronnes officiel

Longueil-Sainte-Marie

Operator	Terminaux de Seine
Quay length	190 m
Theoretical draft	3.50 m
Quay height	4.50 m
Surface area	3.1 ha
Equipment	<ul style="list-style-type: none"> • 2 negative reach stackers: 45 T • 1 weighbridge • 5 reefer stations • Storage: 1,800 TEUs
Services	<ul style="list-style-type: none"> • Bonded storage • Empty deposits possibility • Hazardous goods handling • Terminal guarded at night • AEO status in progress
Access	<ul style="list-style-type: none"> • #1 multimodal platform in the Oise region • River: Oise • Road: A1 (Lille/Paris) freeway, RD200



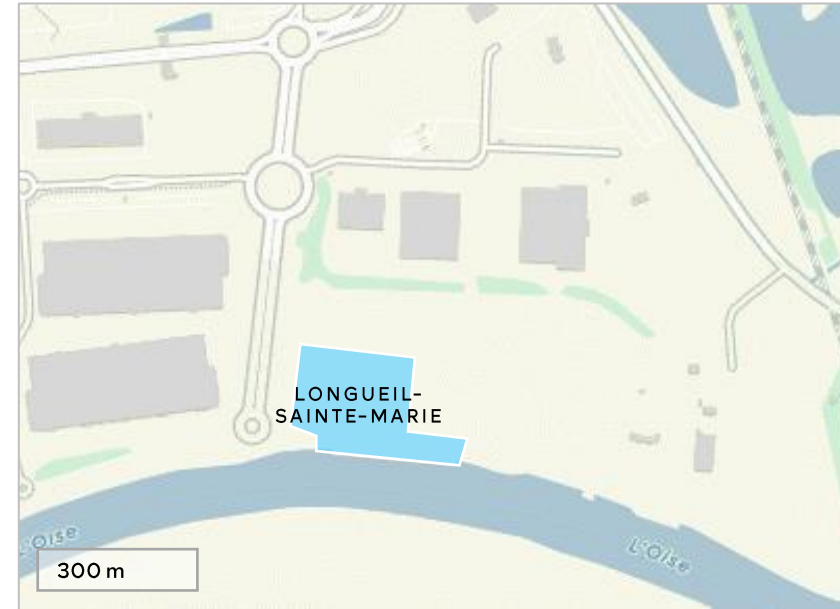
Annual capacity
24,000 TEUs



Transfer under TSF
For river



All river activities
Container



Mr. Juan-Manuel Suárez
General Manager
+33 1 47 94 33 48
juanmanuel.suarez@paris-terminal.com



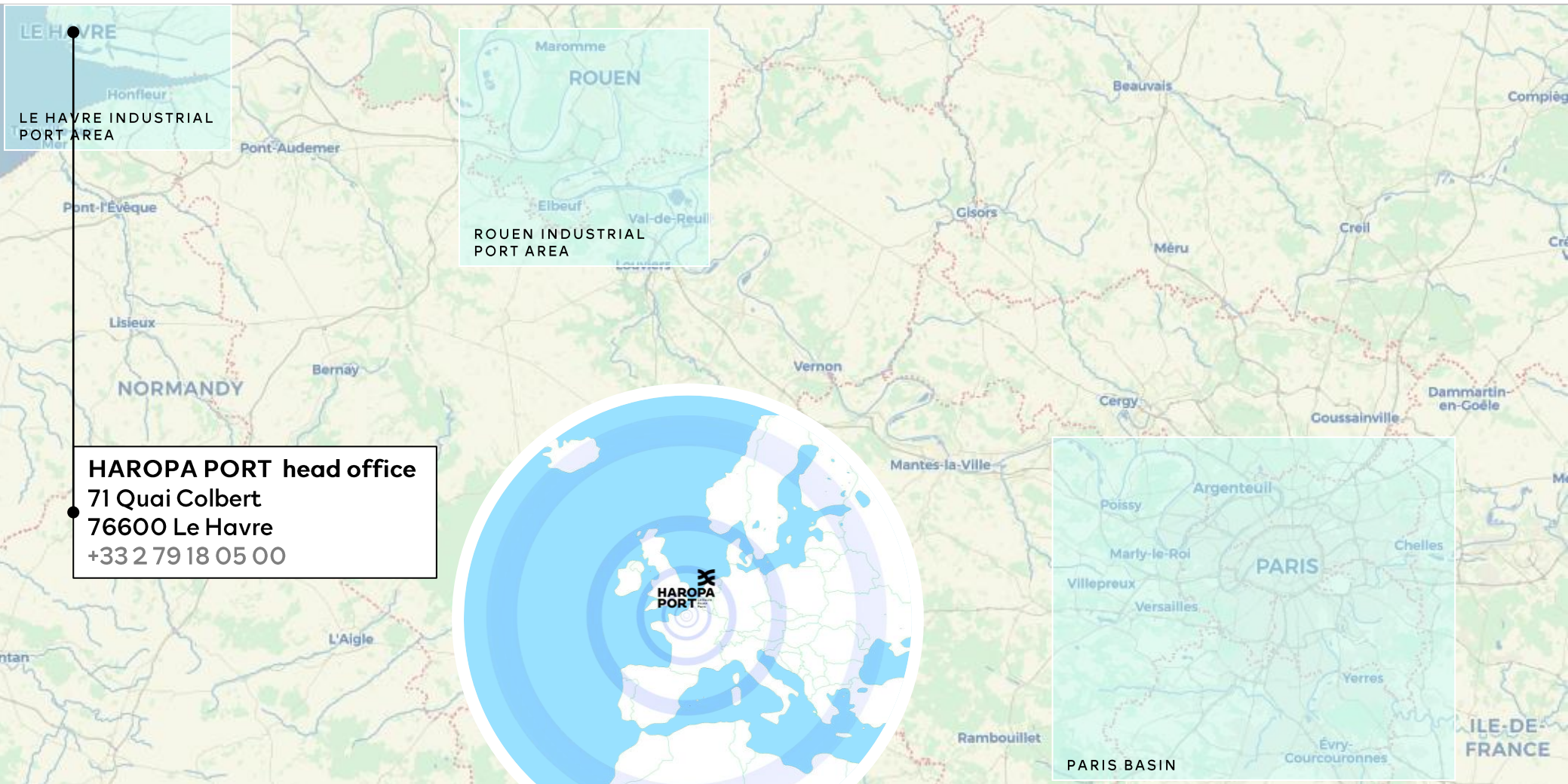
Port de Longueil
Boulevard des Bords de l'Oise
60126 Longueil-Sainte-Marie
8am-5.30pm



© HAROPA PORT



Contact



LE HAVRE
Honfleur
LE HAVRE INDUSTRIAL
PORT AREA

Maromme
ROUEN
Elbeuf
Val-de-Reuil
ROUEN INDUSTRIAL
PORT AREA

HAROPA PORT head office
71 Quai Colbert
76600 Le Havre
+33 2 79 18 05 00



Poissy
Argenteuil
Marty-le-Roi
Chelles
PARIS
Villepreux
Versailles
Yerres
Rambouillet
Évry-Courcouronnes
PARIS BASIN
ILE-DE-FRANCE

Mrs. Charlotte Bellanger
Head of development
Deep sea, Ro-Ro, ferry & cruise

+33 2 79 18 05 81 / +33 6 83 84 55 08
charlotte.bellanger@haropaport.com

For further information
on our full range of land and real estate offers
realestate.haropaport.com

on HAROPA PORT
www.haropaport.com