



Catalogue



**HAROPA
PORT**
Le Havre
Rouen
Paris

River-maritime

Heavy-lift terminals & quays on the Seine axis

Heavy-lift terminals & quays on the Seine axis

HAROPA PORT | Le Havre

- Page 5 • Terminal de l'Atlantique
- Page 6 • Terminaux Nord
- Page 7 • Terminal de France
- Page 8 • Terminaux de Normandie
- Page 9 • Terminal roulier
- Page 10 • Quai public Dresser

HAROPA PORT | Paris

- Page 19 • Agence Seine aval
Limay-Porcheville, Saint-Ouen-l'Aumône, Bruyères/Oise
- Page 22 • Agence de Gennevilliers
- Page 23 • Agence Seine amont
Bonneuil/Marne, Viry-Châtillon, Évry-Courcouronnes,
Corbeil-Saint-Nicolas, Montereau-Fault-Yonne,
Varenes/Seine, Bray/Seine
- Page 30 • Quai public Gron

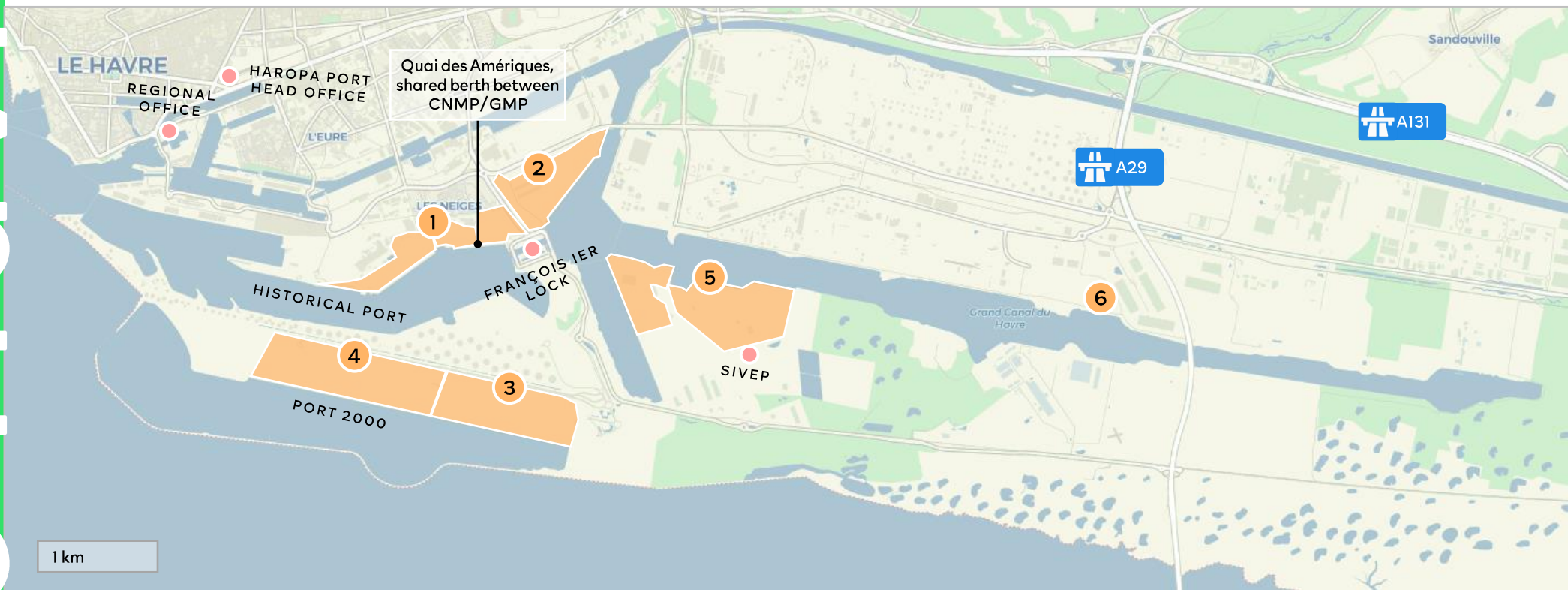
HAROPA PORT | Rouen

- Page 12 • Terminal de Honfleur
- Page 13 • Terminal de Radicâtel
- Page 14 • Terminal de Saint-Wandrille
- Page 15 • TCMD
- Page 16 • Terminal de Rouen Quevilly
- Page 17 • Terminal de l'Ouest



Heavy-lift

Maritime heavy-lift terminals & quay port area of Le Havre



- 1 Terminal de l'Atlantique CNMP
- 4 Terminaux de Normandie TCF (TiL)

- 2 Terminaux Nord GMP
- 5 Terminal roulier SHGT/Manucar (Sogena) & SMR

- 3 Terminal de France GMP
- 6 Quai public Dresser HAROPA PORT | Le Havre

Terminal de l'Atlantique

Operator	Compagnie Nouvelle de Manutention Portuaire, share transfer to Seafrigo (2023)	
Quay length	Atlantique: 800 m	Amériques: 500 m
Theoretical draft	Atlantique: 12.50 m	Amériques: 14 m
Lifting height	33-40 m	
Surface area	32 ha	
Services	<ul style="list-style-type: none"> • OOG loading and stowage • Securing general cargo • CCTV terminal • 24/7 security • ISPS compliance 	
Access	<ul style="list-style-type: none"> • River & maritime: direct access barges • Rail: 3 tracks of 500 m • Road: A29, A131 freeways • Special transport: 1TE, 2TE48, TE120 	



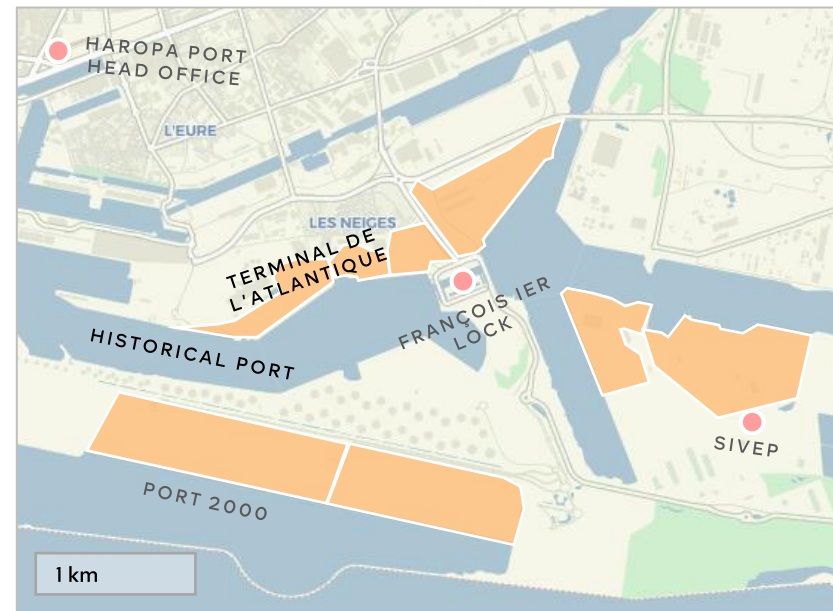
Quay resistance
4 T/sqm



Permissible gauge
●●●● 1,500-3,200 T



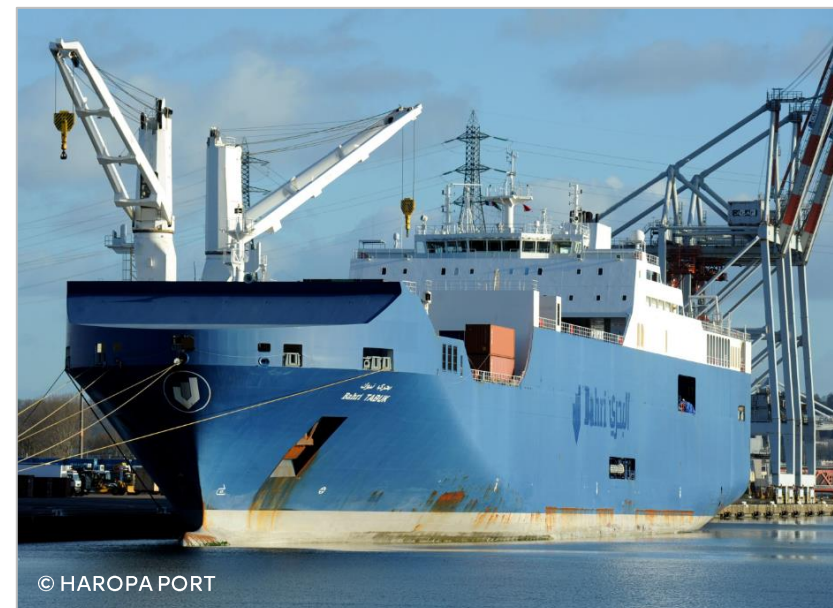
All maritime activities
Heavy-lift
OOG
General cargo
Container



Mr. François Verdier
Technical Manager
+33 2 35 24 65 11
francois.verdier@cnmp.com



CNMP head office
58 Rue Général Chanzy
76600 Le Havre
8am-6pm



© HAROPA PORT

Terminaux Nord

Operator	Générale de Manutention Portuaire	
Quay length	Europe: 1,161 m	Amériques: 500 m
Theoretical draft	Europe: 15 m	Amériques: 14 m
Lifting height	33-40 m	
Surface area	70 ha	
Equipment	<ul style="list-style-type: none"> • 1 Liebherr mobile crane: 100 T • 2 indoor hangars: 23,000 sqm • Vehicle fleet: 50,000 sqm 	
Services	<ul style="list-style-type: none"> • Unloading • Stuffing/unstuffing • Special handling • Direct docking & barge operations • 24/7 security • ISPS compliance • AEO status • ISO standards: 9001, 14001, 28000, 45001 	
Access	<ul style="list-style-type: none"> • River & maritime: direct access barges • Rail • Road: A29, A131 freeways • Special transport: 1TE, 2TE48, TE120 	



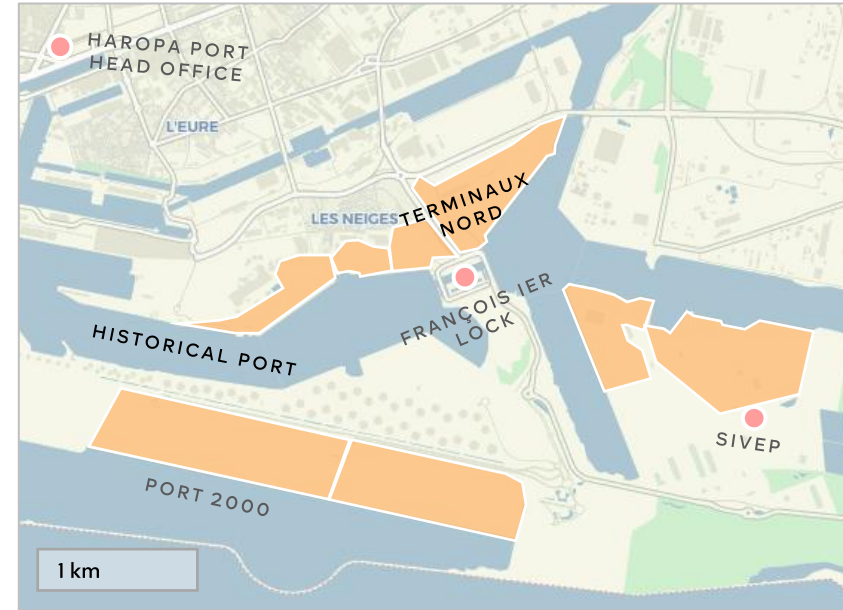
Quay resistance
6 T/sqm



Permissible gauge
●●●● 1,500-3,200 T



All maritime activities
Heavy-lift
Con-Ro
Ro-Ro
General cargo
Project cargo
Container



Mrs. Nathalie Wagner
Sales Manager
+33 7 62 46 29 79
n.wagner@gmportuaire.fr



GMP head office
Avenue du 16^e Port
76600 Le Havre
8.30am-5.30pm



© HAROPA PORT

Terminal de France

Operator	Générale de Manutention Portuaire
Quay length	1,400 m including 200 m for barge; 4 berths
Theoretical draft	15.50 m
Lifting height	40 m
Surface area	72 ha
Services	<ul style="list-style-type: none"> • OOG stuffing/unstuffing • 24/7 security • ISPS compliance • AEO status • ISO standards: 9001, 14001, 28000, 45001
Access	<ul style="list-style-type: none"> • River & maritime: direct access barges • Rail station: 6 tracks of 800 m • Road: A29, A131 freeways • Special transport: ITE, TE72, TE120



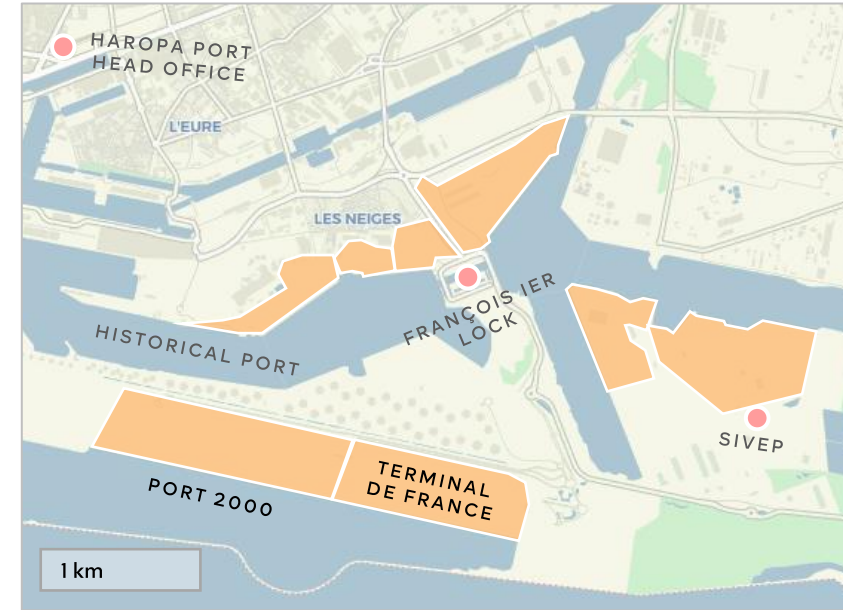
Quay resistance
6 T/sqm



Permissible gauge
●●●● 1,500-3,200 T



All maritime activities
Heavy-lift
OOG
Container



Mrs. Nathalie Wagner
Sales Manager
+33 7 62 46 29 79
n.wagner@gmportuaire.fr



GMP head office
Avenue du 16^e Port
76600 Le Havre
8.30am-5.30pm



© HAROPA PORT

Terminaux de Normandie

Operator	Terminaux à Conteneurs de France (TiL)
Quay length	2,100 m; 6 berths
Theoretical draft	16 m
Lifting height	40-42.50 m
Surface area	107 ha
Services	<ul style="list-style-type: none"> • Heavy-lift area • CCTV terminal • 24/7 security • ISPS compliance • AEO status
Access	<ul style="list-style-type: none"> • River & maritime: direct access barges • Rail: 6 tracks (3: 830 m; 3: 500 m) • Road: A29, A131 freeways • Special transport: ITE, TE72, TE120



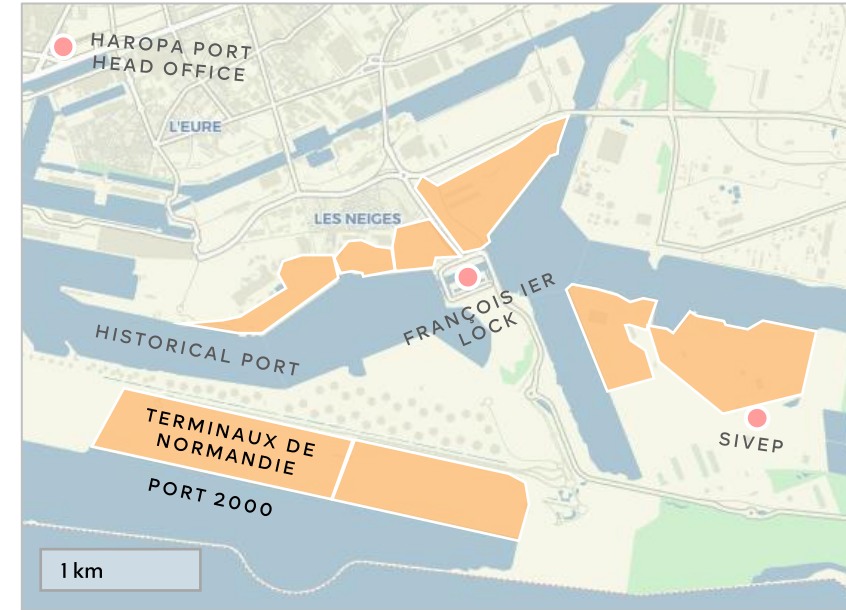
Quay resistance
6 T/sqm



Permissible gauge
●●●● 1,500-3,200 T



All maritime activities
Heavy-lift
Container



Mr. Frank Narbonne
Executive Vice President
+33 2 35 13 79 04
+33 6 75 65 27 75
fnarbonne@tnint.com



TiL head office
32 Rue de Colmar
76600 Le Havre



© HAROPA PORT

Terminal roulier

Operators	SHGT/Manucar (Sogena) & SMR	
Quay length	Quai Bougainville: 980 m; 3 berths	Quai RORO: 1,150 m; 7 berths
Quay height	9 m	7.70-9.50 m
Theoretical draft	14-15 m	
Surface area	104 ha	
Equipment	<ul style="list-style-type: none"> • 7 rear ¾ ramps: 25 m • 3 rear axial ramps: 15-20 m • 1 crane: 650 T 	
Services	<ul style="list-style-type: none"> • Enclosed and secure terminal • 24/7 security: sworn port force • AEO status • ISO standard: 28000 	
Access	<ul style="list-style-type: none"> • #1 French hub for import/export vehicle traffic • River: 2 barge berths • Rail • Road: A29, A131 freeways • Special transport: ITE, TE72, TE120 	



Quay resistance
2-4 T/sqm



Permissible gauge
●●●● 1,500-3,200 T



All maritime activities
Heavy-lift
Ro-Ro
General cargo



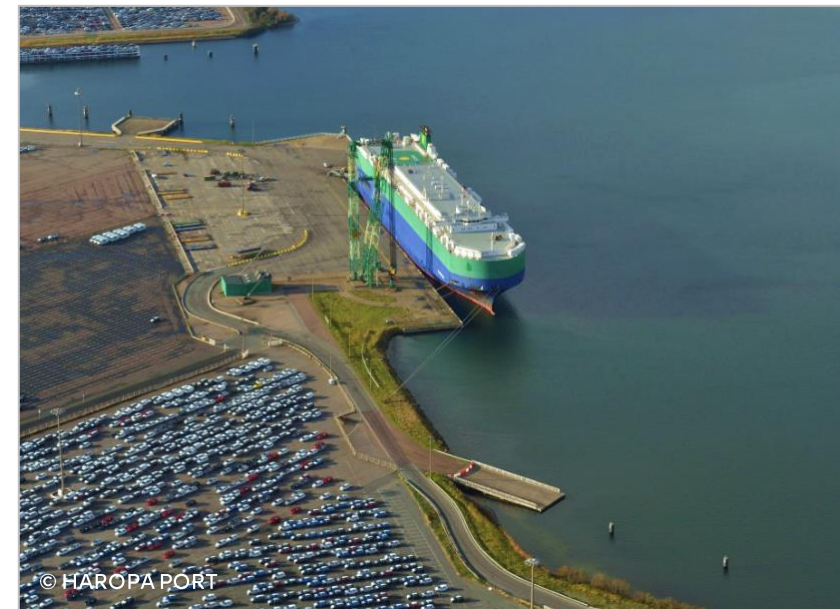
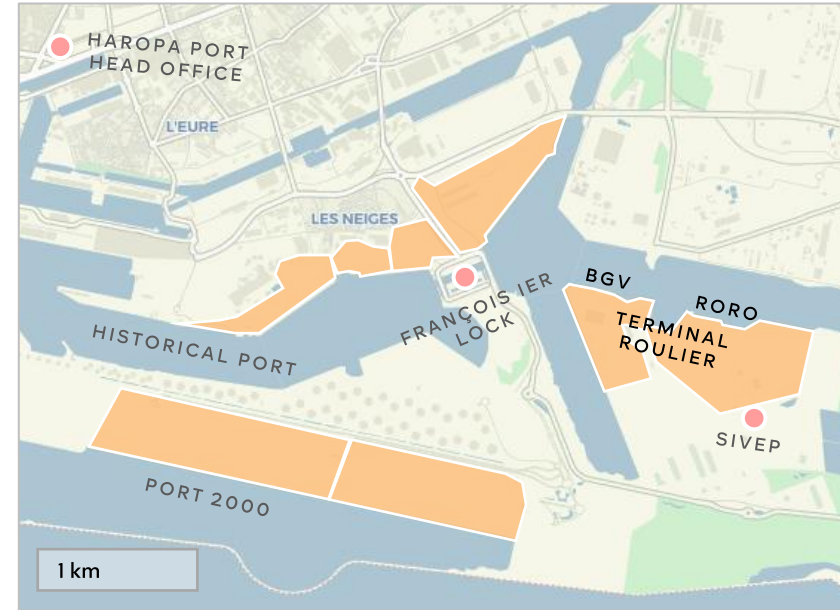
Mr. Alexandre Boquet
Handling Manager
+33 2 32 74 24 80
boquet@shgt.fr



Mr. Erwan Levesque
Operations Manager
+33 2 32 72 71 74
elevesque@smr-france.com



SHGT head office
Quai George V
76600 Le Havre
8am-12pm / 2-5pm



Quai public Dresser

Owner	HAROPA PORT Le Havre
Opening hours	On request
Quay length	38.2 m
Theoretical draft	5.20 m
Surface area	0.1 ha
Access	<ul style="list-style-type: none">• River• Road: A29, A131 freeways• Special transport: ITE, TE72, TE120



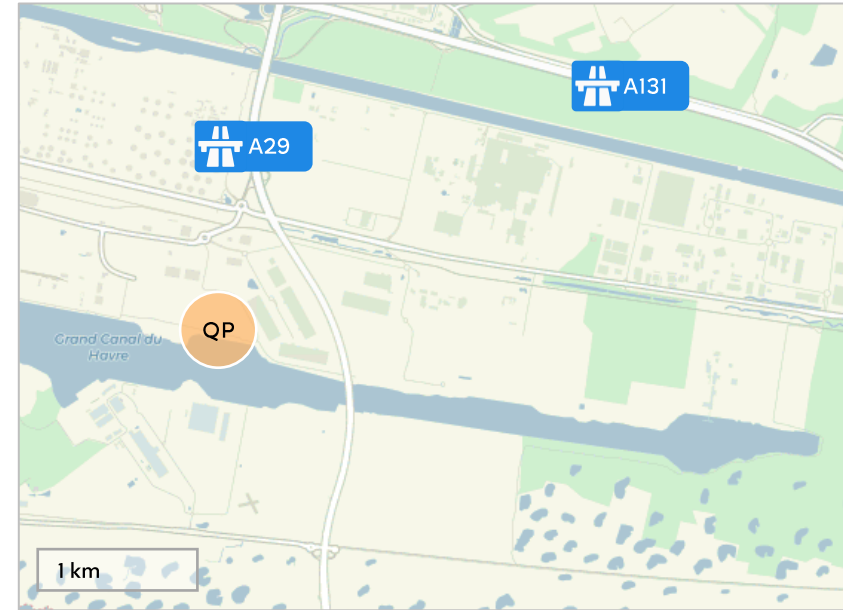
Quay resistance
10 T/sqm



Permissible gauge
●●●● 1,500-3,200 T



All maritime activities
Heavy-lift
Special cargo



Mr. Patrick Bret
Head of development
Breakbulk
+33 2 35 52 54 33
patrick.bret@haropaport.com

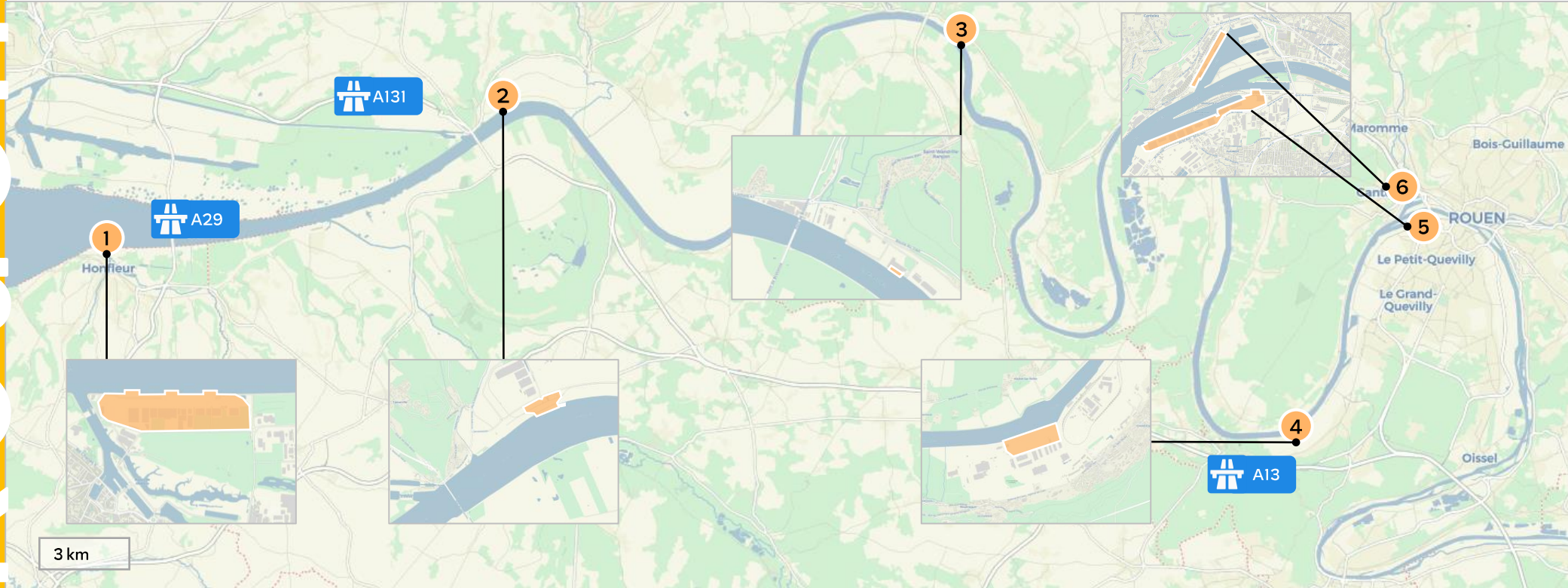


Quai Dresser
Quai public
76430 Oudalle



© HAROPA PORT

Maritime heavy-lift terminals port area of Rouen



1 Terminal de Honfleur
HLP (Sea-Invest/AMS) & Surveyfert

2 Terminal de Radicâtel
Katoen Natie

3 Terminal de Saint-Wandrille
Surveyfert

4 TCMD
Somap (Marfret) & AMS

5 Terminal de Rouen Quevilly
Dockseine (Sogena)

6 Terminal de l'Ouest
Dockseine (Sogena)

Terminal de Honfleur

Operators	Honfleur Logistique Portuaire at 70% Sea-Invest / 30% AMS (Maritime Kuhn) & Surveyfert
Quay length	382.50 m; 3 berths
Theoretical draft	QSH3: 6.40 m QSH2: 5.90 m QSH1: 6.90 m
Surface area	30 ha
Equipment	<ul style="list-style-type: none"> • 3 mobile cranes: 25 T; 30 T; 45 T • 30 forklifts • 18 private warehouses: 70,800 sqm
Services	<ul style="list-style-type: none"> • Stuffing/unstuffing • Loading/unloading general cargo • 24/7 security • ISPS compliance • AEO status • ISO standards: 9001, 45001
Access	<ul style="list-style-type: none"> • #3 port for timber in France • River • Rail • Road: A29 freeway • Special transport: 1TE, 2TE48, TE72, TE120



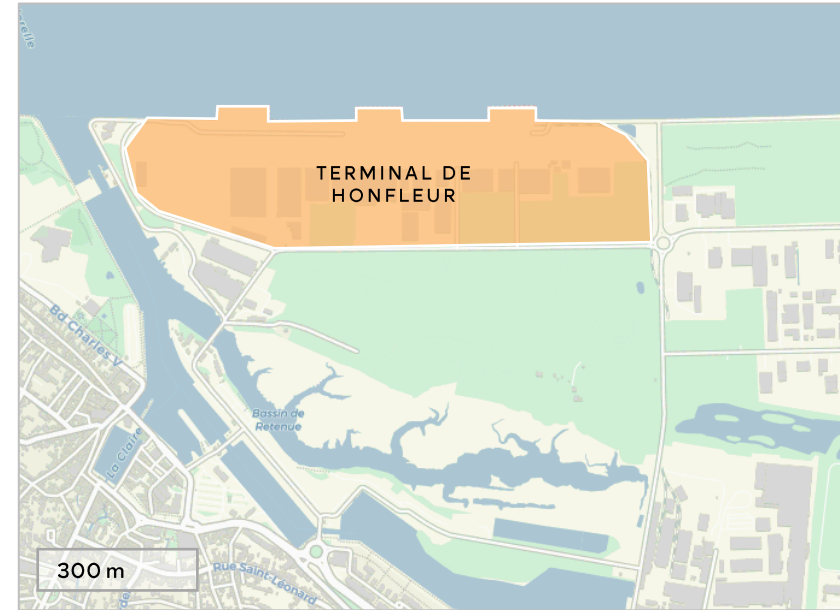
Quay resistance
4 T/sqm



Permissible gauge
●●●● 14,500-27,000 T



All maritime activities
Heavy-lift
Fertilizers
Minerals and ores
Steel products
Forest products
General cargo



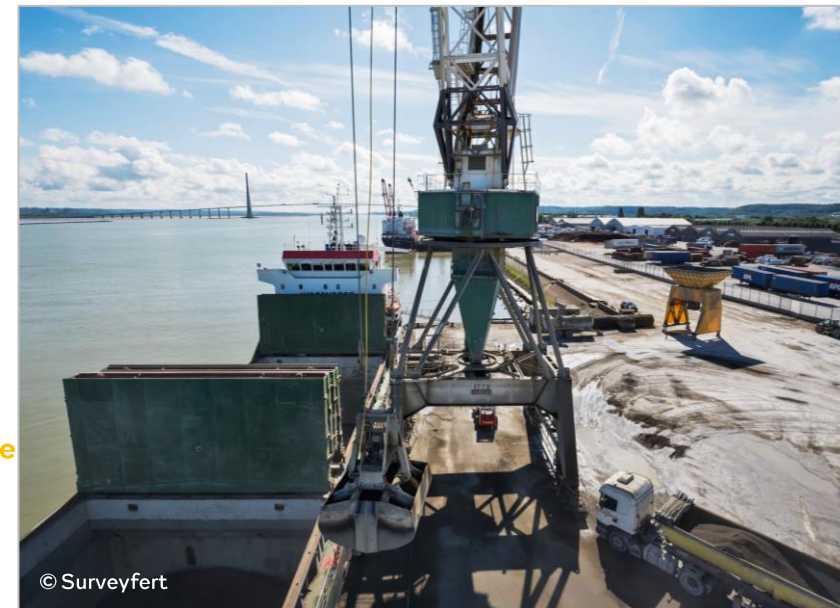
Mr. Stéphane Romain
General Manager
+33 2 31 89 39 19
stephane.romain@hlp.eu.fr



Mr. Fabrice Tardy
General Manager
+33 2 31 89 71 86
ftardy@orange.fr



HLP & Surveyfert head office
Quai en Seine
14600 Honfleur
8am-12pm / 1.30-5.30pm



© Surveyfert

Terminal de Radicâtel

Operator	Katoen Natie
Quay length	420 m
Theoretical draft	10.70 m
Surface area	17 ha
Equipment	<ul style="list-style-type: none"> • 2 mobile cranes: 64 T; 124 T • Private warehouses: 84,000 sqm • Vehicle fleet: 10,000 sqm
Services	<ul style="list-style-type: none"> • Stuffing/unstuffing • Crane supply on request • 24/7 security • ISPS compliance
Access	<ul style="list-style-type: none"> • Multimodal one-stop shop • Ro-Ro: all types of vehicles with access via a ramp and extended by a private mobile pontoon • River • Rail: 4 tracks of 400 m • Road: A131 freeway • Special transport: 1TE, 2TE48, TE120



Quay resistance
4 T/sqm



Permissible gauge
●●●● 14,500-27,000 T



All maritime activities
Heavy-lift
Wind turbines
Project cargo
Dry bulk
General cargo
Ro-Ro
Container



Mr. Arnaud Aubry
Terminal Manager
+33 2 32 84 15 98
arnaud.aubry@katoennatie.com



Katoen Natie head office
Route de la Plaine
76700 Gonfreville-l'Orcher
8am-6pm



© HAROPA PORT

Terminal de St-Wandrille

Operator	Surveyfert
Quay length	650 m
Theoretical draft	9.50-10 m
Surface area	1.1 ha
Equipment	1 warehouse: 600 sqm
Services	<ul style="list-style-type: none"> • 24/7 security • ISPS compliance
Access	<ul style="list-style-type: none"> • River • Road: A29 freeway • Special transport: ITE



Quay resistance
4 T/sqm



Permissible gauge
●●●● 14,500-27,000 T



All maritime activities
Heavy-lift
Coils
Dry bulk
Peat
Aggregates
General cargo



Mr. Fabrice Tardy
General Manager
+33 2 31 89 71 86
ftardy@orange.fr



Surveyfert head office
1 Quai Saint-Wandrille
76490 Rives-en-Seine
8am-12pm / 1.30-5.30pm



© HAROPA PORT

TCMD

Operators	Somap (Marfret) & AMS (Maritime Kuhn)
Quay length	1,150 m; 6 berths
Theoretical draft	10.50-11.30 m
Surface area	41 ha
Equipment	<ul style="list-style-type: none"> • 1 mobile crane: 100 T • 3 indoor warehouses: 4,000 sqm • 12 private warehouses: 200,000 sqm • Breakbulk storage: 100,000 m²
Services	<ul style="list-style-type: none"> • CCTV terminal • 24/7 security • ISPS compliance • AEO status • ISO standard: 9001
Access	<ul style="list-style-type: none"> • River • Rail • Road: A13 freeway • Special transport: 1TE, 2TE48, TE120



Quay resistance
6 T/sqm



Permissible gauge
●●●● 14,500-27,000 T



All maritime activities
Heavy-lift
Con-Ro
Ro-Ro
General cargo
Container



Mr. Vincent Saurel
Manager
+33 2 32 81 83 50
vs aurel@marfret.fr



Mr. Bruno Martin
Manager
+33 2 32 11 46 83
b.martin@ams-mk.com



Somap & AMS head office
Boulevard de l'Île aux Oiseaux
76530 Grand-Couronne
7.30-11.15am / 1.30-5.15pm



© HAROPA PORT

Terminal de Rouen Quevilly

Operator	Dockseine (Sogena)
Quay length	1,400 m; 4 berths
Theoretical draft	7-9.50 m
Surface area	40 ha
Equipment	<ul style="list-style-type: none"> • 3 mobile cranes: 40-100 T • 2 Ro-Ro ramps • 7 warehouses: 71,500 sqm
Services	<ul style="list-style-type: none"> • Stuffing/unstuffing • Special handling • Transport services • CCTV terminal • 24/7 security • ISPS compliance • AEO status • ISO standards: 9001 and GMP+
Access	<ul style="list-style-type: none"> • Quadrimodal platform: direct transshipment of vessels, barges and trains • River • Rail • Road: A13 freeway • Special transport: 2TE48, TE120



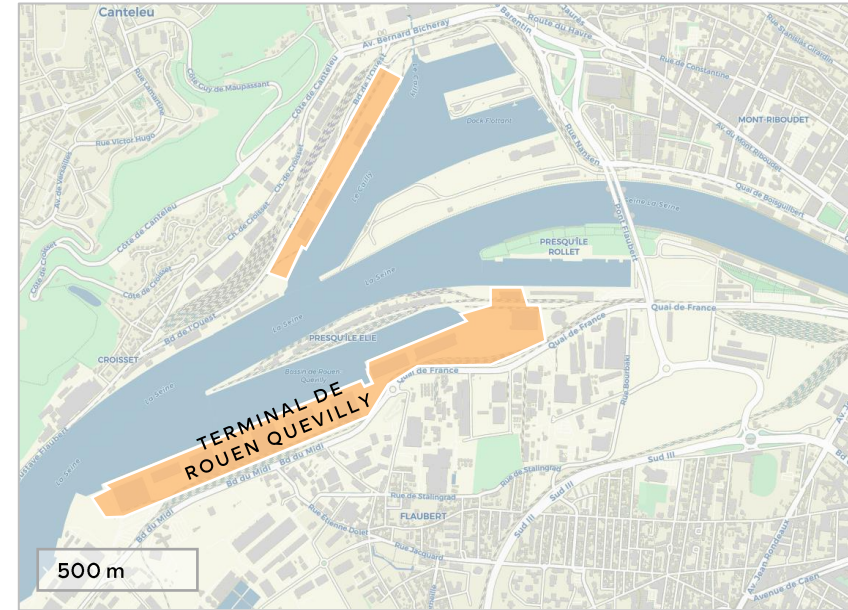
Quay resistance
4 T/sqm



Permissible gauge
●●●● 14,500-27,000 T



All maritime activities
Heavy-lift
Ro-Ro
Dry bulk
Forest products
Project cargo
General cargo



Mr. Michel Teste
General Manager
+33 2 35 58 17 37
michel.teste@dockseine.com



Dockseine head office
34 Boulevard du Midi
76100 Rouen
8am-12pm / 1.30-5.30pm



© HAROPA PORT

Terminal de l'Ouest

Operator	Dockseine (Sogena)
Quay length	800 m
Theoretical draft	On request
Surface area	5 ha
Equipment	<ul style="list-style-type: none"> • 3 cranes: 25 T; 25 T; 32 T • 1 warehouse: 3,000 sqm • Available outdoor storage: 50,000 sqm
Services	<ul style="list-style-type: none"> • Stuffing/unstuffing • CCTV terminal • 24/7 security • ISPS compliance • AEO status • ISO standards: 9001 and GMP+
Access	<ul style="list-style-type: none"> • River • Rail: 6 connections • Road: A13 freeway • Special transport: 1TE, 2TE48, TE120



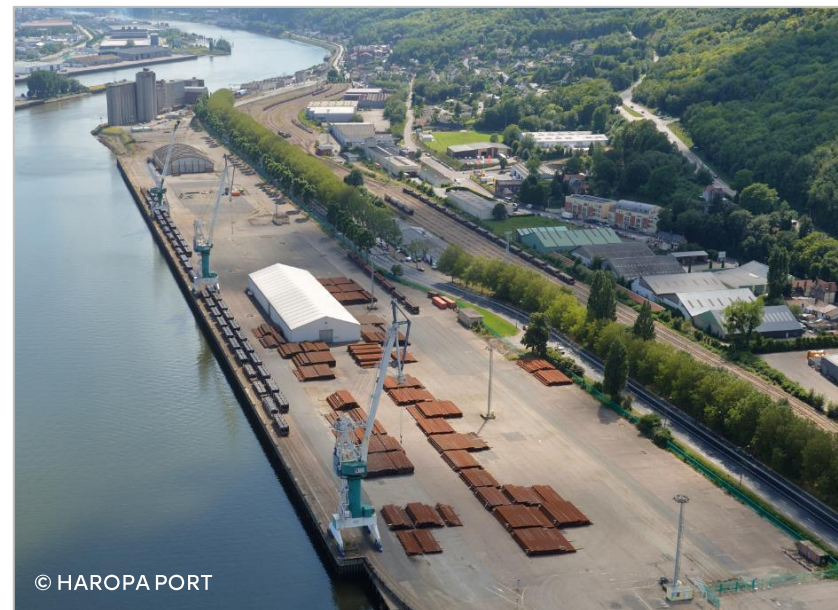
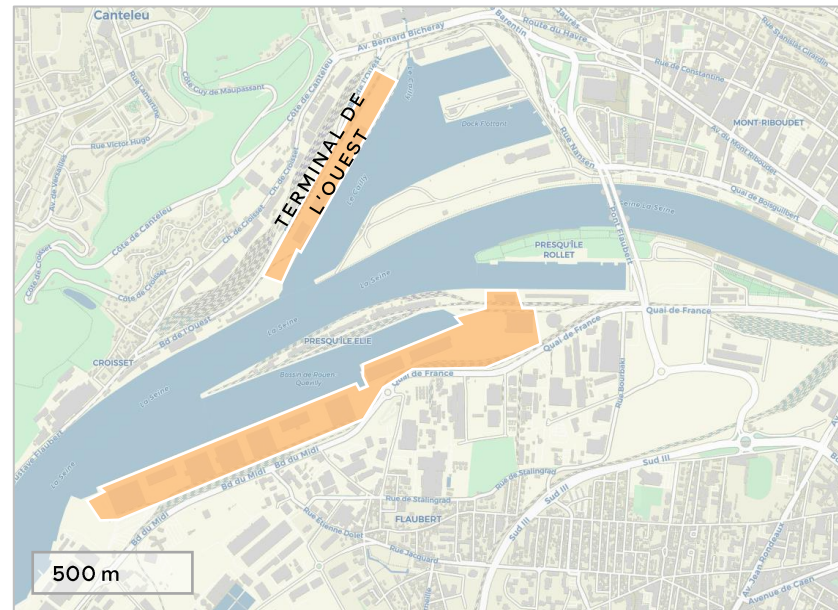
Quay resistance
4 T/sqm



Permissible gauge
●●●● 14,500–27,000 T



All maritime activities
Heavy-lift
General cargo



© HAROPA PORT



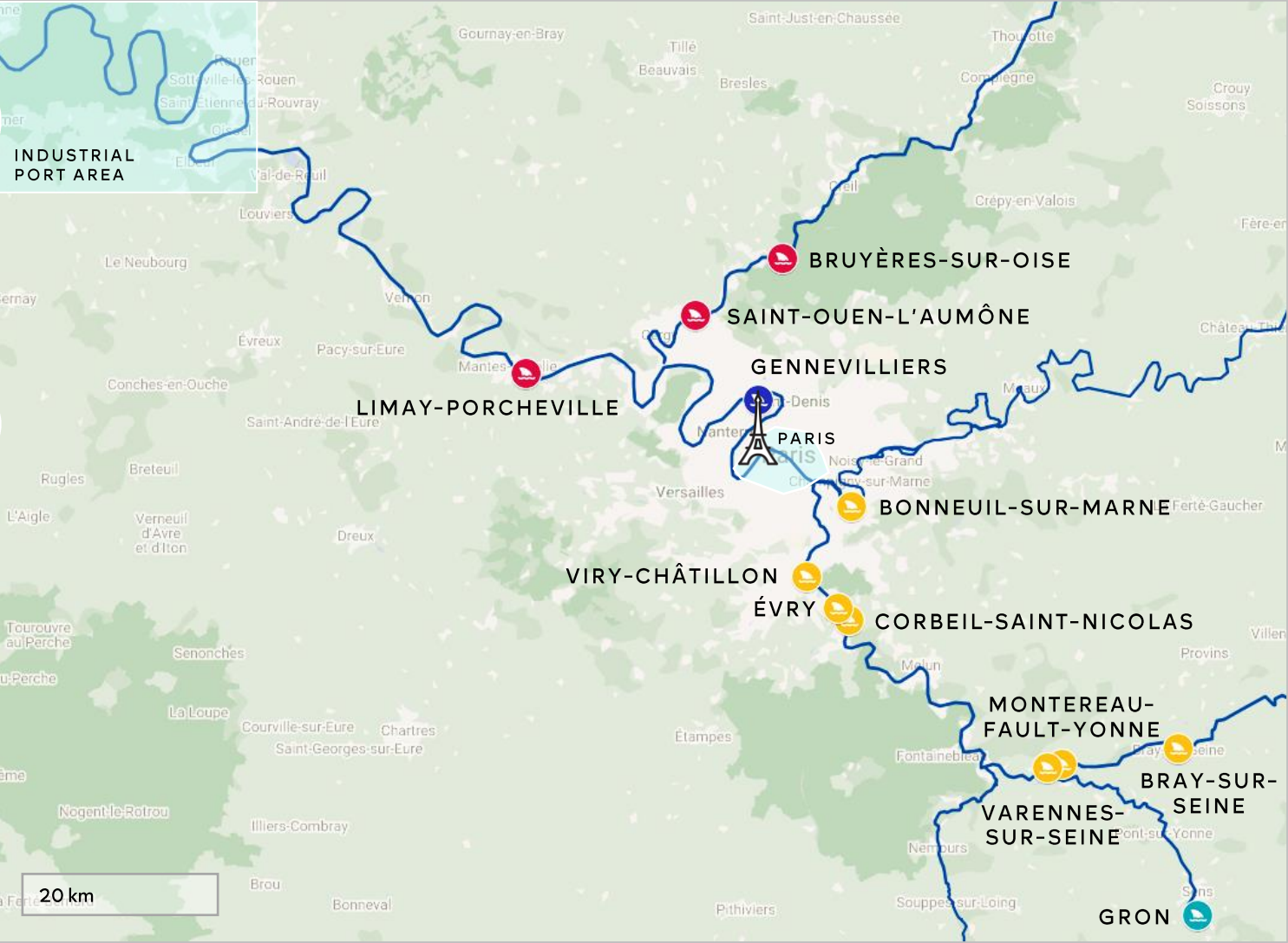
Mr. Michel Teste
General Manager
+33 2 35 58 17 37
michel.teste@dockseine.com



Dockseine head office
34 Boulevard du Midi
76100 Rouen
8am–12pm / 1.30–5.30pm

Paris

River heavy-lift quays port area of Paris



- Agence Seine aval
HAROPA PORT | Paris
- Agence de Gennevilliers
HAROPA PORT | Paris
- Agence Seine amont
HAROPA PORT | Paris
- Quai public Gron
Logiyonne & CCI Yonne

Limay-Porcheville

Shared-use quay	QUP 1	QUP 2	QUP 3
Real estate module	Ref. 5735	Ref. 5733	Ref. 5734
Opening hours	8am-5pm	8am-5pm	8am-5pm
Quay length	14 m	60 m	85 m
Theoretical draft	3.50 m	3.50 m	3.50 m
Quay height	3.51 m	3.42 m	3.53 m
Surface area	2,650 sqm	570 sqm	1,875 sqm
Equipment	4 dolphins	4 bollards; 3 dock ladders	4 bollards; 4 dock ladders
Access	<ul style="list-style-type: none"> • #1 port at the Paris region entrance network • River: Seine • Rail • Road: A13 freeway • Special transport: TE120 		
Access control	Security control station with badge		



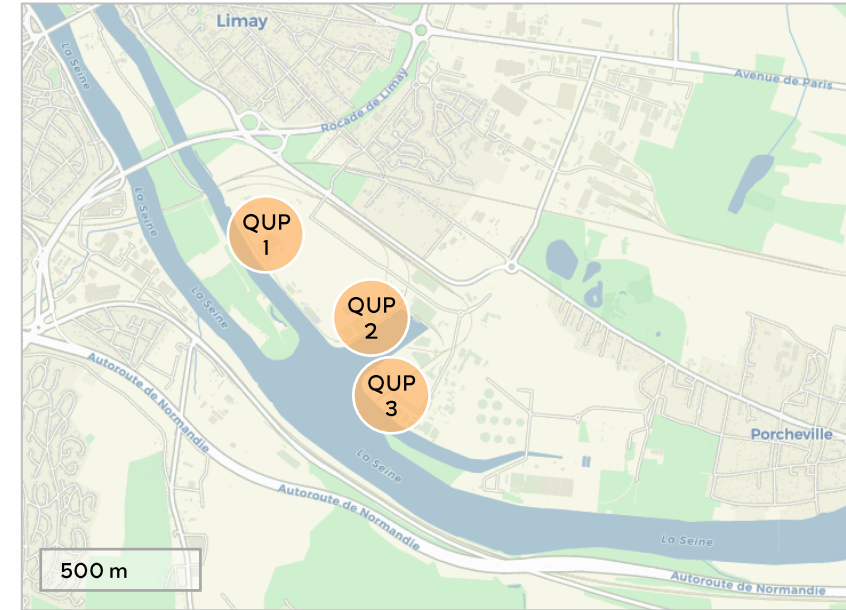
Quay resistance
6 T/sqm



Permissible gauge
●●●● 1,500-3,200 T



All river activities
Heavy-lift



Agence Seine aval
+33 1 30 92 09 51
asav@haropaport.com



Port de Limay
Route des Grands Vals
78520 Limay



© HAROPA PORT

Saint-Ouen-l'Aumône

Shared-use quay	Quai Saint-Ouen-l'Aumône
Real estate module	Ref. 5756
Opening hours	8am-5pm
Quay length	80 m
Theoretical draft	3 m
Quay height	3.65 m
Surface area	2,620 sqm
Equipment	<ul style="list-style-type: none"> • 2 bollards • 2 dock ladders
Access	<ul style="list-style-type: none"> • River: Seine • Road: A15 freeway, D14 • Special transport: ITE, TE120
Access control	Manual gate with code lock



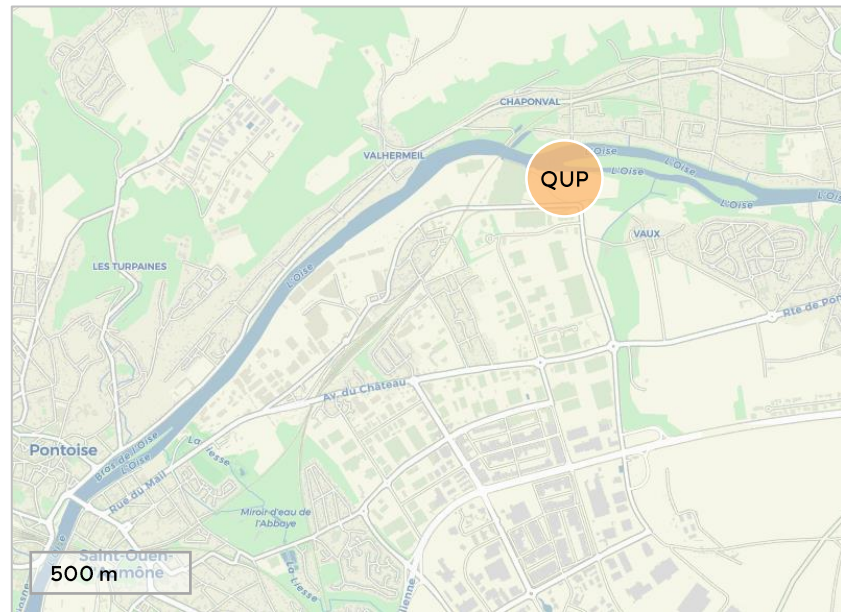
Quay resistance
6 T/sqm



Permissible gauge
●●●● 1,500-3,200 T



All river activities
Heavy-lift



Agence Seine aval
+33 1 30 92 09 51
asav@haropaport.com



Port de St-Ouen-l'Aumône
Rue des Fortes Terres
95310 Saint-Ouen-l'Aumône



© HAROPA PORT

Bruyères-sur-Oise

Shared-use quay	Quai Amont
Real estate module	Ref. 5729
Opening hours	8am-5pm
Quay length	100 m
Theoretical draft	3.50 m
Quay height	3.48 m
Surface area	10,000 sqm
Equipment	<ul style="list-style-type: none"> • 2 dolphins • 5 bollards • 5 dock ladders
Access	<ul style="list-style-type: none"> • River: Oise • Road: A16 freeway, D4 • Special transport: TE120
Access control	Automated gate



Quay resistance
6 T/sqm



Permissible gauge
●●●● 1,500-3,200 T



All river activities
Heavy-lift



Agence Seine aval
+33 1 30 92 09 51
asav@haropaport.com



Port de Bruyères-sur-Oise
Chemin du Jacloret
95820 Bruyères-sur-Oise



© HAROPA PORT

Gennevilliers

Shared-use quay	QSP Quai haut
Real estate module	Ref. 5755
Opening hours	24/7
Quay length	150 m
Theoretical draft	4 m
Quay height	4.95 m
Surface area	5,700 sqm
Equipment	<ul style="list-style-type: none"> • Several dolphins • 7 bollards • 4 dock ladders
Access	<ul style="list-style-type: none"> • At the heart of the economic activity between La Défense and the Paris-Charles de Gaulle Airport • River: Seine • Rail: 3 tracks of 350 m on Darse 1 • Road: A86, A14, A15, A1 freeways • Special transport: TE120
Access control	Badge/intercom



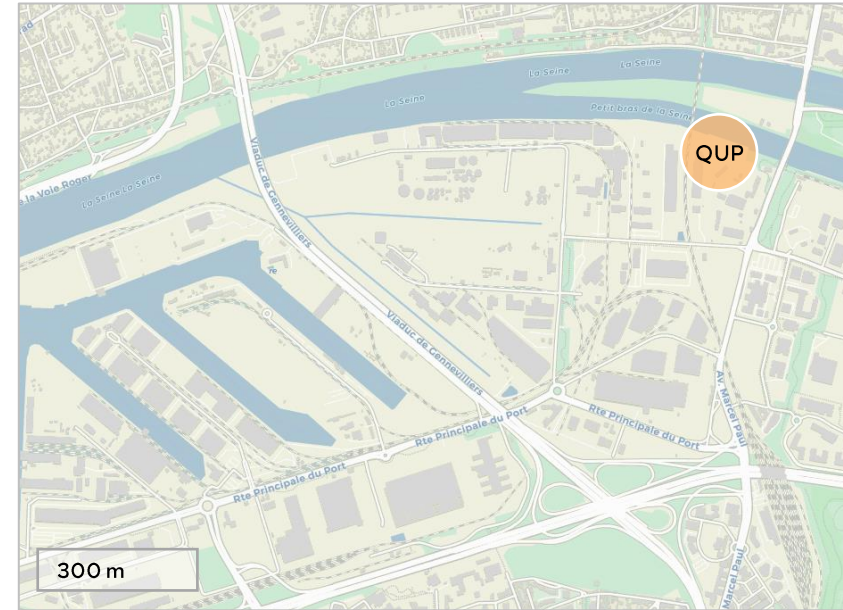
Quay resistance
6 T/sqm



Permissible gauge
●●●● 1,500-3,200 T



All river activities
Heavy-lift



Agence de Gennevilliers
+33 1 46 13 98 98
accueilg@haropaport.com



Port de Gennevilliers
Impasse des Petits Marais
92230 Gennevilliers



© HAROPA PORT

Bonneuil-sur-Marne

Shared-use quay	QUP 1	QUP 2	QUP 3
Real estate module	Ref. 5769	Ref. 5740	Ref. 5770
Opening hours	24/7	24/7	24/7
Quay length	87 m	48 m	62 m
Theoretical draft	3.20 m	3.20 m	3.20 m
Quay height	34.6 m	34.65 m	34.76 m
Surface area	2,077 sqm	2,127 sqm	2,184 sqm
Equipment	2 bollards: 10 T	2 bollards: 10 T	2 bollards: 10 T
Access	<ul style="list-style-type: none"> • 8 km south-east of Paris • River: Marne; 2 locks from Paris • Rail: direct connection to the rail terminal • Road: A86, A6, A4 freeways + RN406 (2027) • Special transport: 2TE48, TE120 		
Access control	Key or code given after booking		



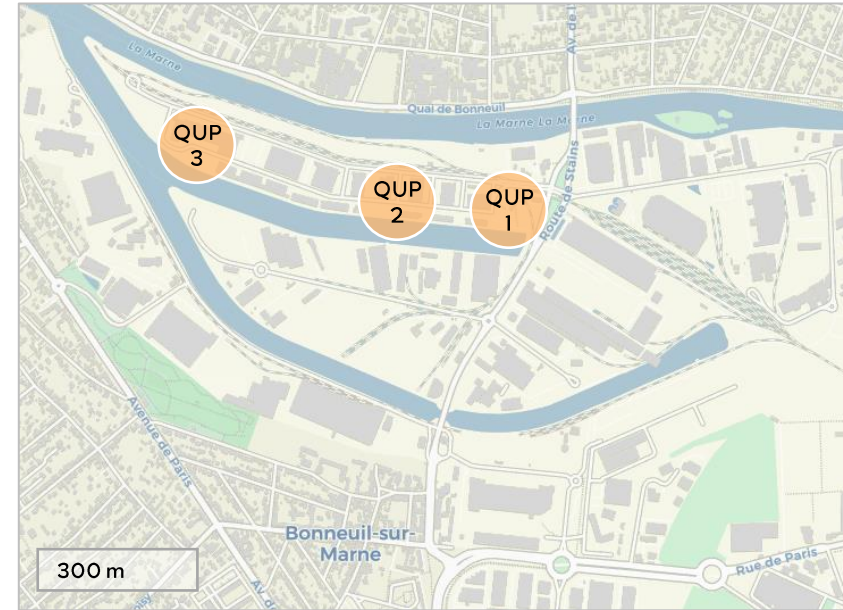
Quay resistance
6 T/sqm



Permissible gauge
●●●● 1,500-3,200 T



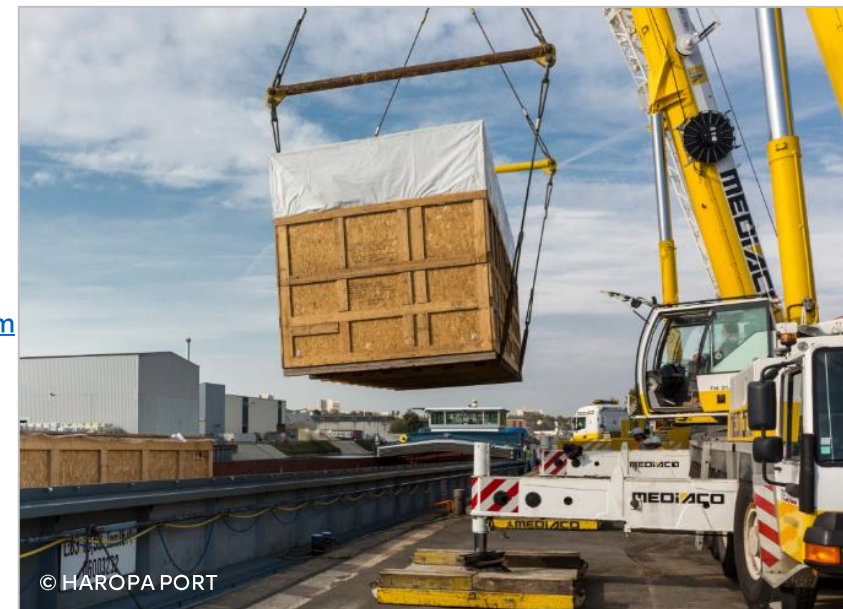
All river activities
Heavy-lift
Excavated material



Agence Seine amont
+33 1 43 39 02 50
accueil-asam@haropaport.com



Port de Bonneuil
Route de la Darse
94380 Bonneuil-sur-Marne



© HAROPA PORT

Viry-Châtillon

Shared-use quay	Quai Viry-Châtillon
Real estate module	Ref. 5781
Opening hours	8am-5pm unless otherwise indicated
Quay length	95.99 m
Theoretical draft	2.80 m
Quay height	33.83 m
Surface area	1,904 sqm
Equipment	2 bollards: 20 T
Access	<ul style="list-style-type: none"> • River: Seine; 1 lock from Paris • Road: A6 freeway • Special transport: ITE, TE120



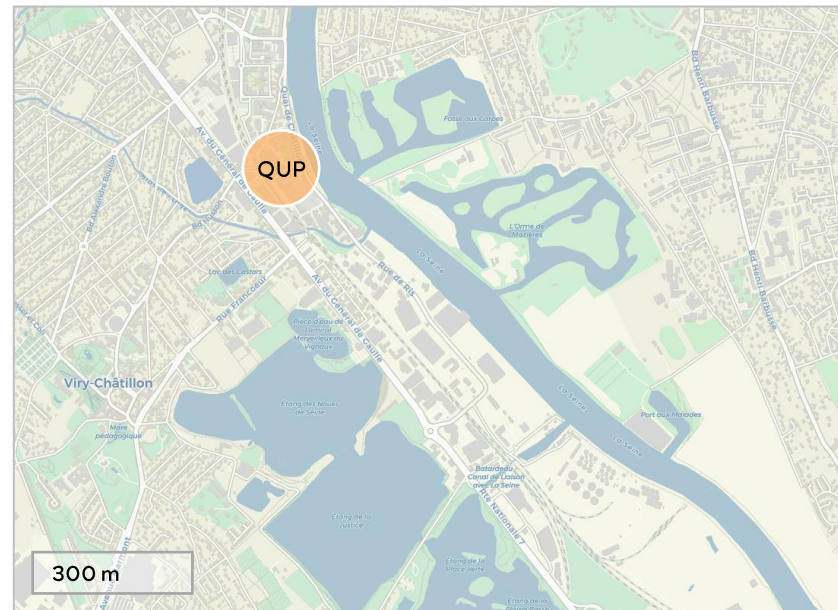
Quay resistance
6 T/sqm



Permissible gauge
●●●● 1,500-3,200 T



All river activities
Heavy-lift
Excavated material



Agence Seine amont
+33 1 43 39 02 50
accueil-asam@haropaport.com



Port de Viry-Châtillon
Quai de Châtillon
91170 Viry-Châtillon



© HAROPA PORT

Évry-Courcouronnes

Shared-use quay	Quai Évry
Real estate module	Ref. 5773
Opening hours	8am-5pm unless otherwise indicated
Quay length	133 m
Theoretical draft	2.80 m
Quay height	33.25 m
Surface area	4,152 sqm
Equipment	<ul style="list-style-type: none"> • 4 bollards: 10 T • 1 reinforced area: 18 T/sqm • 1 Ro-Ro ramp
Access	<ul style="list-style-type: none"> • 25 km south of Paris • River: Seine; 3 locks from Paris • Rail • Road: A6 freeway • Special transport: ITE, TE72, TE120
Access control	Key or code given after booking



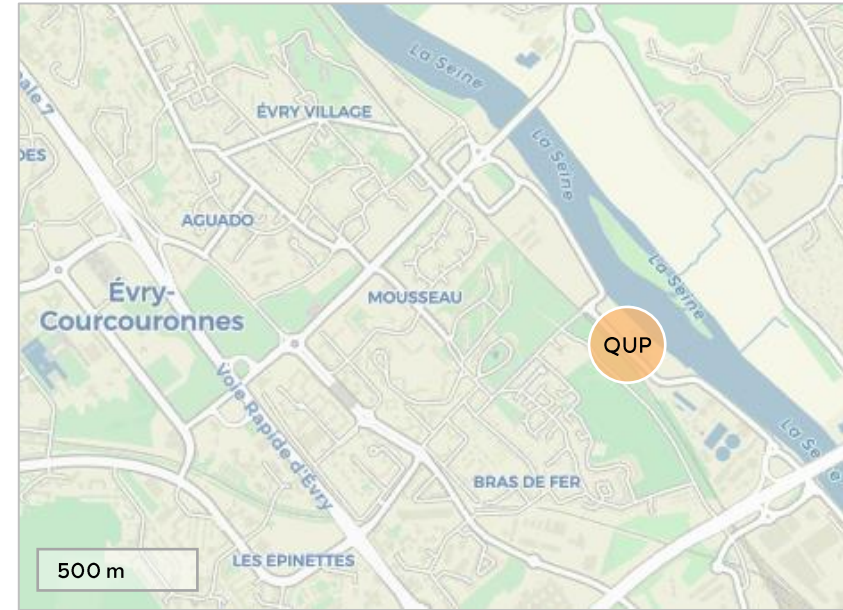
Quay resistance
6 T/sqm



Permissible gauge
●●●● 1,500-3,200 T



All river activities
Heavy-lift
Ro-Ro
Grain



Agence Seine amont
+33 1 43 39 02 50
accueil-asam@haropaport.com



Port d'Évry
Rue des Paveurs
91000 Évry-Courcouronnes



© Évry-Courcouronnes officiel

Corbeil-Saint-Nicolas

Shared-use quay	Quai Corbeil-Saint-Nicolas
Real estate module	Ref. 5771
Opening hours	8am-5pm unless otherwise indicated
Quay length	50 m
Theoretical draft	2.80 m
Quay height	32.62 m
Surface area	976 sqm
Equipment	2 bollards: 10 T
Access	<ul style="list-style-type: none"> • River: Seine; 3 locks from Paris • Road: A6 freeway • Special transport: 1TE, TE72, TE120
Access control	Key or code given after booking



Quay resistance
3.4 T/sqm



Permissible gauge
●●●● 1,500-3,200 T



All river activities
Heavy-lift



Agence Seine amont
+33 1 43 39 02 50
accueil-asam@haropaport.com



Port de Corbeil-St-Nicolas
Quai Jacques Bourguin
91100 Corbeil-Essonnes



© HAROPA PORT

Montereau-Fault-Yonne

Shared-use quay	Quai Montereau
Real estate module	Ref. 5777
Opening hours	8am-5pm unless otherwise indicated
Quay length	98 m
Theoretical draft	1.90 m
Quay height	47.54 m
Surface area	3,525 sqm
Equipment	<ul style="list-style-type: none"> • 2 bollards: 10 T • 3 bollards: 10 T; minute stop at la petite Darse • 2 loading gabions • Storage: 3,525 sqm
Access	<ul style="list-style-type: none"> • River: Seine; 8 locks to Paris • Road: A5 freeway • Special transport: 1TE, TE72, TE120
Access control	Code given after booking



Quay resistance
6 T/sqm



Permissible gauge
●●●● 1,500-3,200 T



All river activities
Heavy-lift
Excavated material
Grain
Cable reels
General cargo



Agence Seine amont
+33 1 43 39 02 50
accueil-asam@haropaport.com



Port de Montereau
Rue des Sècherons
77130 Montereau-Fault-Yonne



Varenes-sur-Seine

Shared-use quay	Quai Varenes-sur-Seine
Real estate module	Ref. 5782
Opening hours	8am-5pm unless otherwise indicated
Quay length	58 m
Theoretical draft	3.20 m
Quay height	31.39 m
Surface area	4,815 sqm
Equipment	4 bollards
Access	<ul style="list-style-type: none"> • River: Seine • Road: A5 freeway • Special transport: 1TE, TE72, TE120
Access control	Key or code given after booking



Quay resistance
6 T/sqm



Permissible gauge
●●●● 1,500-3,200 T



All river activities
Heavy-lift



Agence Seine amont
+33 1 43 39 02 50
accueil-asam@haropaport.com



Port de Varenes-sur-Seine
Chemin du Gué Pucelle
77130 Varenes-sur-Seine



Bray-sur-Seine

Shared-use quay	QUP 1	QUP 2	QUP 3
Real estate module	Ref. 5488		
Theoretical draft	1.90 m	1.90 m	1.90 m
Quay height	5.50 m	5.50 m	5.50 m
Surface area	1,965 sqm	2,391 sqm	1,258 sqm
Access	<ul style="list-style-type: none"> River: Seine Road: A5 freeway Special transport: TE120 		



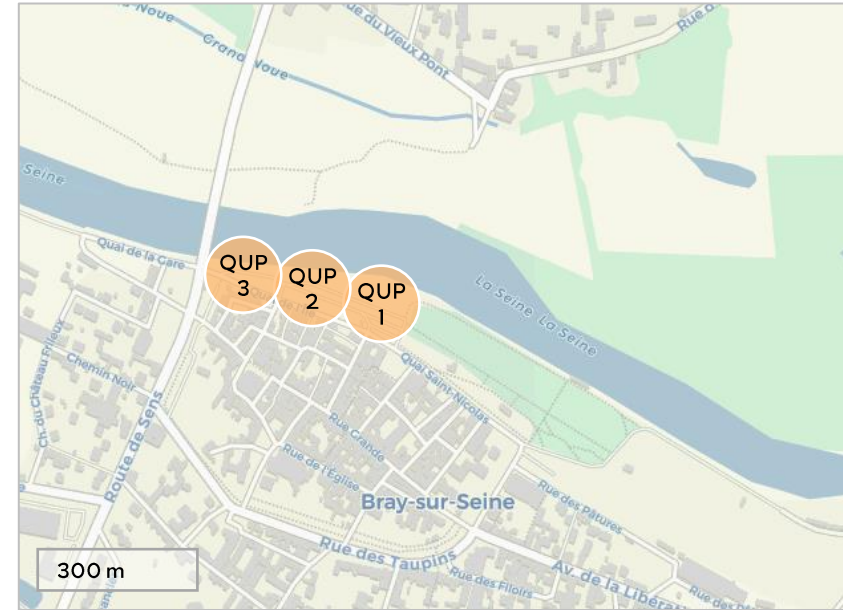
Quay resistance
3-6 T/sqm



Permissible gauge
●●● 650-1,000 T



All river activities
Heavy-lift
Excavated material
Grain
Fertilizers
Aggregates



Agence Seine amont
+33 1 43 39 02 50
accueil-asam@haropaport.com



Port de Bray-sur-Seine
Quai de l'île
77480 Bray-sur-Seine



© HAROPA PORT

Quai public Gron

Owners	Logiyonne & CCI Yonne
Opening hours	8.30am-12pm / 1.30-5pm
Quay length	120 m including 90 m of public quay
Theoretical draft	1.90 m
Quay height	5.50 m
Surface area	21,000 sqm
Equipment	<ul style="list-style-type: none"> • Several bollards • Several dock ladders • 1 forklift: 8 T • 1 Ro-Ro ramp • Several nacelles • Several cranes including 2: 250 T
Access	<ul style="list-style-type: none"> • River: Yonne • Road: A5, A19 freeways • Special transport: 2TE48, TE94, TE120
Access control	Hand-delivered to the guard post



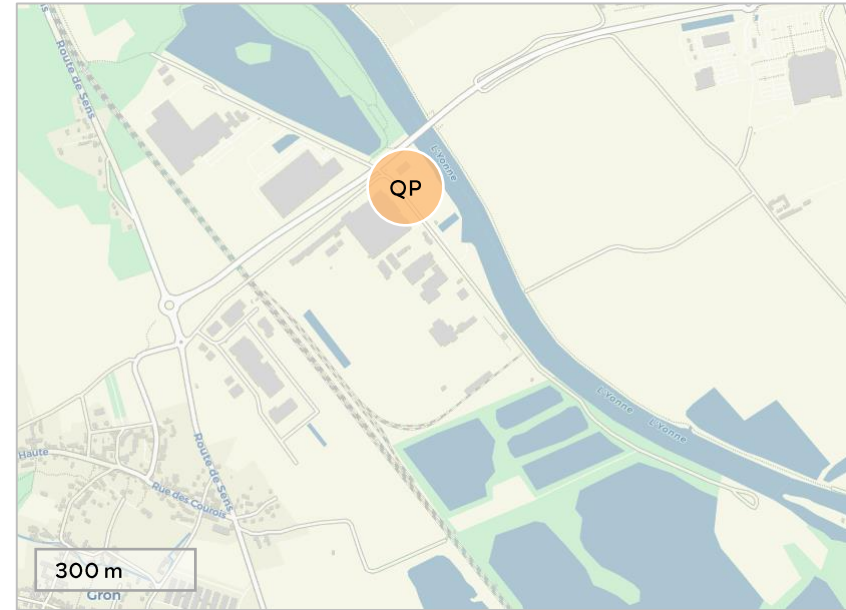
Quay resistance
6 T/sqm



Permissible gauge
●●●● 250-400 T



All river activities
Heavy-lift
Ro-Ro
Paper
Tanks & transformers
Cable reels
General cargo



Mr. David Buquet
Logiyonne General Manager
+33 7 78 04 10 33
david.buquet@logiyonne.com



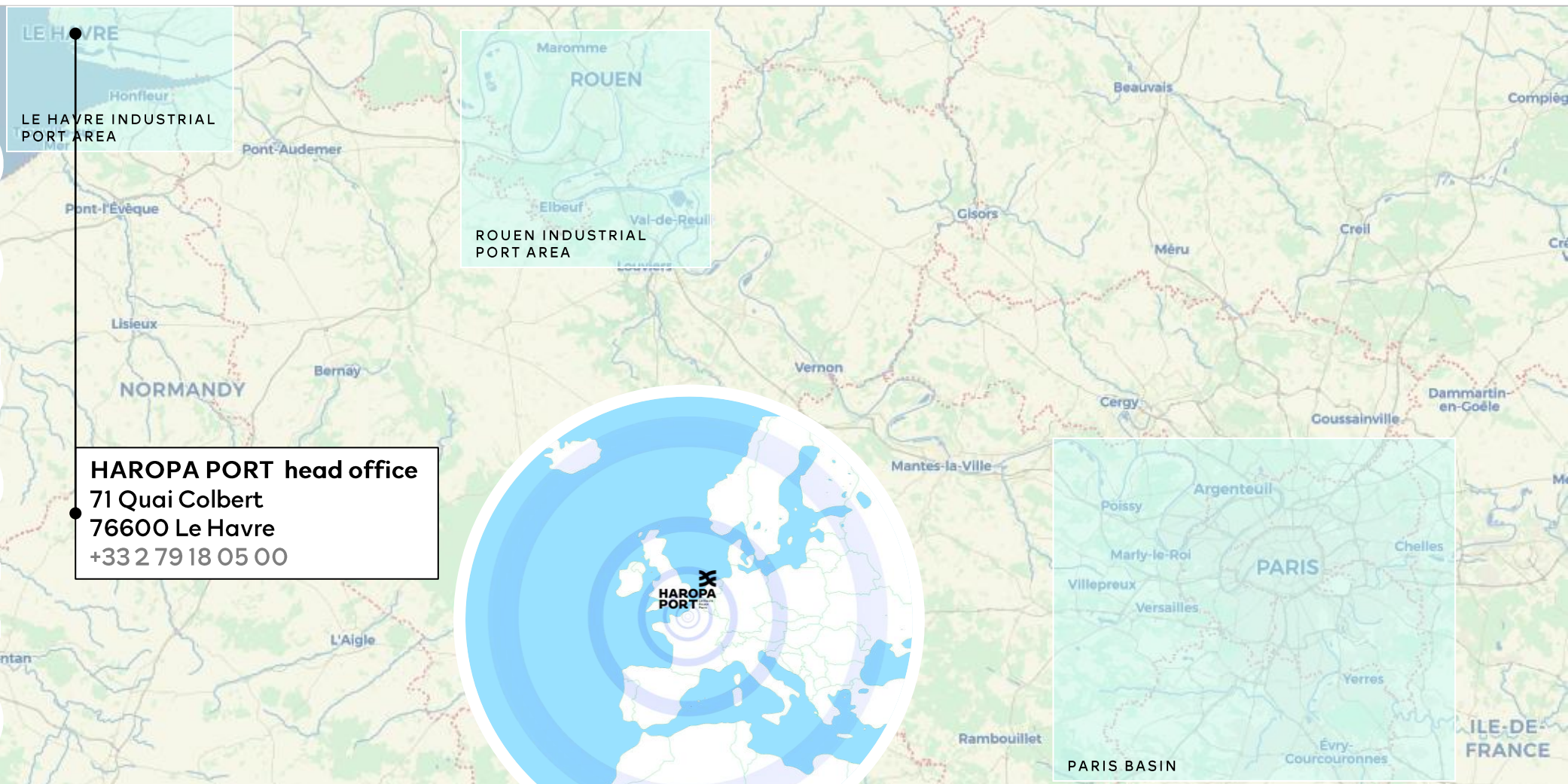
Port de Gron
Rue du Port au Vin
89100 Gron



© VNF



Contact



LE HAVRE
Honfleur
LE HAVRE INDUSTRIAL
PORT AREA

Maromme
ROUEN
Elbeuf
Val-de-Reuil
ROUEN INDUSTRIAL
PORT AREA

HAROPA PORT head office
71 Quai Colbert
76600 Le Havre
+33 2 79 18 05 00



Argenteuil
Chelles
PARIS
Versailles
Yerres
Évry-Courcouronnes
PARIS BASIN

Mr. Patrick Bret
Head of development
Short sea, breakbulk, export groupage

+33 2 35 52 54 33 / +33 6 76 78 99 37
patrick.bret@haropaport.com

For further information
on our full range of land and real estate offers
realestate.haropaport.com

on HAROPA PORT
www.haropaport.com