

Terminal de l'Ouest

Operator	Dockseine (Sogena)
Quay length	800 m
Theoretical draft	On request
Surface area	5 ha
Equipment	<ul style="list-style-type: none"> • 3 cranes: 25 T; 25 T; 32 T • 1 warehouse: 3,000 sqm • Available outdoor storage: 50,000 sqm
Services	<ul style="list-style-type: none"> • Stuffing/unstuffing • CCTV terminal • 24/7 security • ISPS compliance • AEO status • ISO standards: 9001 and GMP+
Access	<ul style="list-style-type: none"> • River • Rail: 6 connections • Road: A13 freeway • Special transport: 1TE, 2TE48, TE120



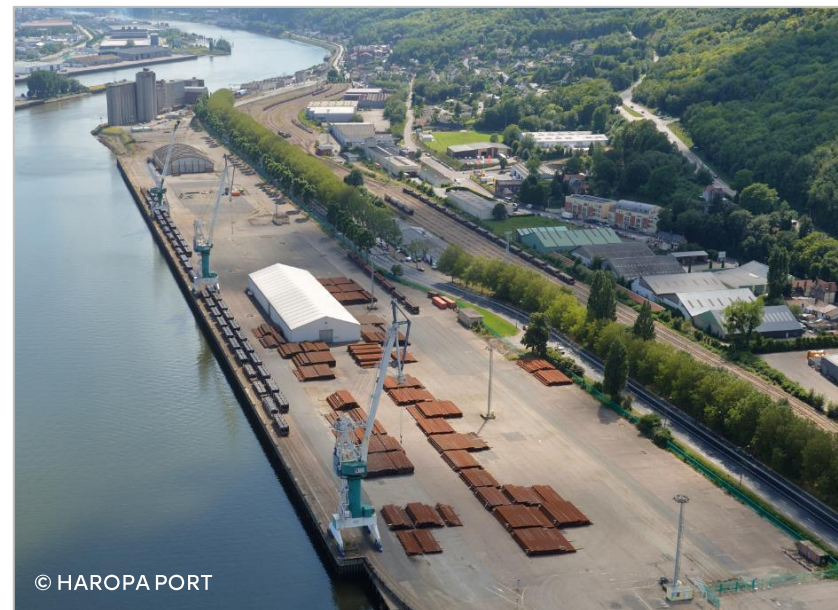
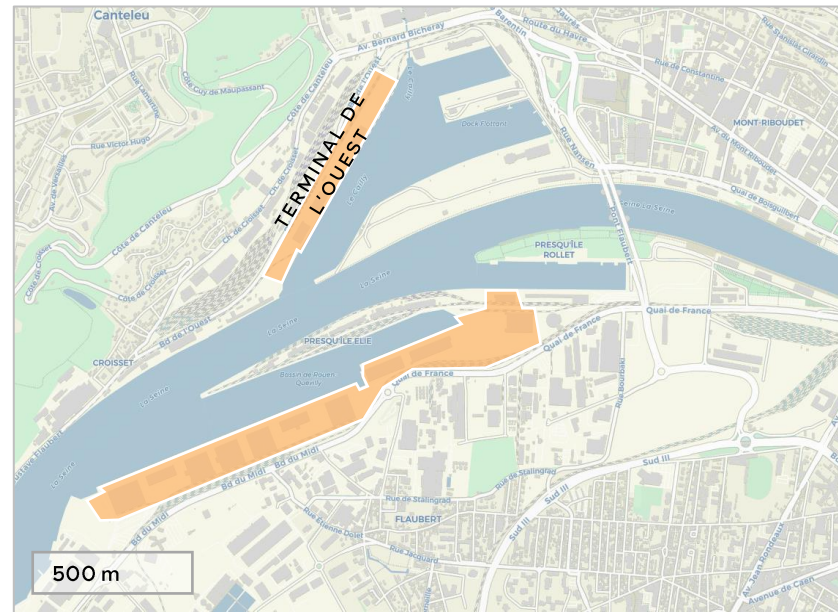
Quay resistance
4 T/sqm



Permissible gauge
●●●● 14,500–27,000 T



All maritime activities
Heavy-lift
General cargo



© HAROPA PORT



Mr. Michel Teste
General Manager
+33 2 35 58 17 37
michel.teste@dockseine.com



Dockseine head office
34 Boulevard du Midi
76100 Rouen
8am–12pm / 1.30–5.30pm